

*Elephants are the keepers of ancient secrets,  
for they walked the world when it was new.*



*Shirley and Bunny*



# the Elephant Sanctuary® in Tennessee

ANNUAL REPORT 2007

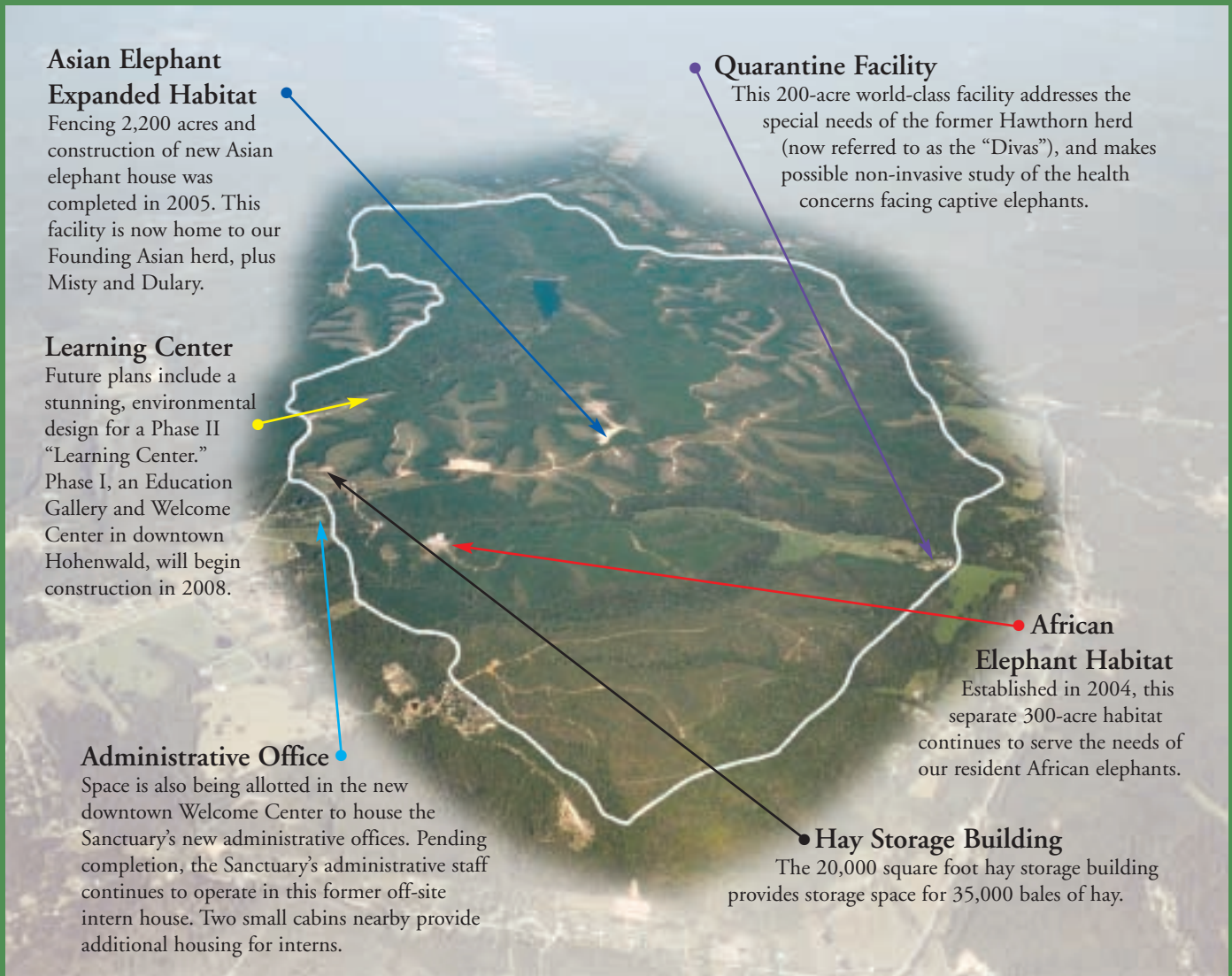
The nation's premier natural-habitat refuge for  
endangered Asian and African elephants.

A 501(c)(3) nonprofit organization

[www.elephants.com](http://www.elephants.com)

# In 2007, The Elephant Sanctuary in Tennessee

*focused on habitat improvements for the welfare of its elephant residents,  
including several expansion fencing projects and two new ponds.*



## Asian Elephant Expanded Habitat

Fencing 2,200 acres and construction of new Asian elephant house was completed in 2005. This facility is now home to our Founding Asian herd, plus Misty and Dulary.

## Learning Center

Future plans include a stunning, environmental design for a Phase II "Learning Center." Phase I, an Education Gallery and Welcome Center in downtown Hohenwald, will begin construction in 2008.

## Administrative Office

Space is also being allotted in the new downtown Welcome Center to house the Sanctuary's new administrative offices. Pending completion, the Sanctuary's administrative staff continues to operate in this former off-site intern house. Two small cabins nearby provide additional housing for interns.

## Quarantine Facility

This 200-acre world-class facility addresses the special needs of the former Hawthorn herd (now referred to as the "Divas"), and makes possible non-invasive study of the health concerns facing captive elephants.

## African Elephant Habitat

Established in 2004, this separate 300-acre habitat continues to serve the needs of our resident African elephants.

## Hay Storage Building

The 20,000 square foot hay storage building provides storage space for 35,000 bales of hay.

*2,700-acre natural-habitat refuge for needy Asian and African elephants*

## *Our mission is to:*

- Provide a spacious and rich environment in which captive elephants can freely exercise their true nature, a place where they are treated with respect and minimal intrusion.
- Support non-invasive research; practice progressive methods of management and care of resident elephants.
- Share knowledge about captive elephants through education and consultation.
- Collaborate with organizations working to improve the conditions of all elephants worldwide.

## *Message from the Directors*

2007 was a year of great success. Following the exponential growth that our organization experienced over the past several years, this year demanded internal restructuring and renewed focus. The development and retention of staff and volunteers was a theme that led to the expansion of our internship program, restructuring of the board of directors, and the creation of subcommittees to handle the many projects our continued growth required.


Our greatest accomplishment this year was the arrival of Dulary from the Philadelphia Zoo. This collaborative effort between the Sanctuary and the Nation's oldest Zoological Institution bridged a gap that hopefully will pave the way for more zoo-held elephants to be retired to sanctuaries.

Our greatest commitment this year was the purchase of two downtown buildings which, upon renovation, will house our Education Gallery and Welcome Center. This public venue will create unlimited outreach opportunities, financially benefit our community, and provide a valuable resource to the county and beyond.

Our greatest challenges were as a direct result of our tremendous growth over the past years. Knowing where to find answers was key as we reached out to experts for advice on how best to address the challenges of meeting staffing needs, protecting our organization from copyright infringement, insuring that our facilities were adequately maintained and that our elephants continued to receive the most progressive and appropriate care possible.

Building on what we have accomplished in 2007, we are ready for the next year of growth. Empowered by the progress we have already made, we are secure in knowing that our organization is stable; ready and able to accomplish the goals we have set for 2008.

Sincerely,

*Carol Buckley Scott Blais*      

Carol Buckley & Scott Blais  
Founding Directors

# The Elephant Sanctuary in Tennessee

*Located in the gently rolling hills of middle Tennessee, The Elephant Sanctuary is the largest natural-habitat refuge of its kind designed specifically for Asian and African elephants. A landscape of seeded pastures, dense woodlands, a spring-fed lake, ponds and streams is now a haven for sick and needy elephants retired from zoos and circuses.*



*Dulary arrived on May 1, 2007 from the Philadelphia Zoo and became another true example of how elephants will immediately—and quite effortlessly—embrace sanctuary life and herd companionship when given the freedom.*

# The Year In Review

Compared with the multiple elephant rescues, expansions and emotional struggles of the previous year, 2007 was a welcomed relief, offering us some much-needed time to reflect, adjust to our growth and begin focusing on new goals.

However, rarely does a year go by when The Elephant Sanctuary doesn't welcome a new resident, and this year we were proud to accept Dulary from the Philadelphia Zoo. She had spent nearly all of her 43 years on exhibit in Philadelphia—one of a growing number of cities that have come to the realization their outdated zoo yards were not serving the needs of their elephants. We were very grateful that Philadelphia decided to set an example by putting Dulary's welfare first and chose to retire their lone Asian elephant to Tennessee and close their exhibit entirely.

While Dulary took several hours to build up enough courage to disembark from her transport trailer when it arrived at the new Asian barn, it was by no means a precursor for her assimilation into Sanctuary life. She immediately felt comfortable with Tarra and within moments they formed an instant friendship, touching trunks and vocalizing as if they had known each other for years. Misty was the next elephant to greet Dulary and instantly fell in love with her new sister, too. In the months that followed, Dulary and Misty have forged a very special bond, with Delhi never more than a few steps away.

This year Delhi's osteomyelitis continued to concern her caregivers. The decision was made to explore an alternative treatment to help ease her pain and progressing infections. Our 62-year old "granny" continues to amaze us with her resilience and spirit.



*Tarra, our most experienced new resident "greeter," seemed to know exactly what to say to Dulary to put her at ease and convince her to take her final steps to freedom.*

Other members of the Founding Herd continue to thrive. Tarra criss-crosses the habitat with her dog Bela, making a point to visit and spend time with all her sisters wherever they may be. With the loss of Jenny last year, Shirley and Bunny have become much closer. To her delight, Tarra, still the youngest member of this herd, is sometimes treated to a little extra attention from Shirley, satisfying her selfless desire to nurture.

Winkie returned to her cooperative and affectionate self following a tragic accident in 2006, further underscoring the belief that it was an episode of Post Traumatic Stress Disorder that prompted her uncharacteristic behavior that day. She and Sissy remain devoted companions and enjoy exploring the habitat together.

As a herd, the Divas continue to make great strides. They are all looking radiantly healthy and happy—you would hardly recognize many of them from photos taken the day they arrived. Lottie remains the matriarch of the herd, while Minnie, who has made great progress, can still be a bit of a challenge some days with her childish desire to dominate her sisters. Queenie is still delightful and full of play. Ronnie and

Debbie, who round out the “Fabulous Five” enjoy venturing off on their own, finding new areas of the habitat that the other Divas have yet to discover.

When it became apparent that the “Threesome” just didn’t feel comfortable around the other five members of the herd, we expanded the corral fencing near the Quarantine barn to section off a large pasture area just for them. The results were immediate—Billie, Frieda and Liz became instantly relaxed and within weeks we began to witness a whole new side of Billie—a personality full of joy and play. It seems ironic that a fence would be the solution to freedom, but in Billie’s case, it was all that she needed; a chance to be herself without fear of intimidation from other more rowdy members of her herd.

When Frieda arrived in 2006, her feet were sore and her nails were overgrown. X-rays revealed she suffers from osteomyelitis in two toes. While her case is not yet as advanced as Tina and Delhi’s, we recognize the severity of this disease and know that a breakthrough discovery is required if Frieda is to survive this disease.

With the success of the corral expansion at the Quarantine barn, we immediately embarked upon similar fencing projects in the Asian and African habitats. With such a beautiful—but



*The new, heavy-duty multi-acre corral in Africa was a \$600,000 project that took nearly a year to complete. What a positive difference it has made for Flora!*



*The Threesome—Billie, Frieda and Liz.*

sometimes unpredictable—mix of elephant personalities, this will help give all our current and future residents the choice to create a comfortable separation from other individuals or groups within their herd if that is their wish.

Our African girls, Zula, Tange and Flora, are flourishing. Zula and Tange broaden their habitat explorations further every year, sometimes amusing us with their enthusiasm for adventure. This year we completed Flora’s yard expansion to encompass many more acres of forest, which she has enjoyed immensely. Flora is our second rescued elephant to be diagnosed with Post Traumatic Stress Disorder. Although she clearly has become more at ease every day, we will continue to monitor her condition.

This past year also marked the Sanctuary’s first encounter with record-breaking heat waves and a severe regional drought. We were relieved to see our spring-fed ponds and wells held up to the challenge. During the summer months we dug two new ponds: one near the new Asian barn and one for the African girls. By the time we had coordinated a plan with TVA to help fill them with water pumped from the lake, normal rainfall patterns began to return and the ponds filled quickly on their own. They are now ready to welcome the elephants next season when the warmer temperatures return.

# Elephant Health & Welfare Institute

Under the supervision of Dr. Susan Mikota, this year the Sanctuary acquired equipment to create a lab for its newly-formed Elephant Health & Welfare Institute. The purpose of this endeavor is to develop improved diagnostics and treatments for diseases that plague captive elephants.

Thanks to many donations from underwriters, we were able to obtain cabinets, a microscope, and many other much-needed items, including the generous loan of a VetScan Chemistry Analyzer from the Abaxis Company. This latest acquisition has enabled Dr. Mikota to make the Institute fully functional. Stored samples from all of our elephants have now been collected and organized in a central inventory. These banked samples (mostly serum) are very important and can be used for various studies to learn more about elephants and the problems that affect them, including, but not limited to, tuberculosis.

In addition, what began as a

product demonstration of portable digital x-ray equipment is now a permanent part of the Elephant Sanctuary's health care equipment. This portable, state-of-the-art machine allows us to x-ray all of the elephants' feet, even when they are out in the habitat. Foot problems and arthritis remain one of the most serious problems for captive elephants today. This x-ray equipment will let us detect problems that are developing even before an elephant shows symptoms; early detection equals early treatment.



*Elephants with osteomyelitis like Frieda get relief with daily foot soaks.*

There are obvious benefits to creating the Elephant Health & Welfare Institute. While this on-site resource is invaluable in facilitating the non-invasive study and monitoring of the health of our elephants, the efforts of this Institute will actually be much more far reaching. Knowledge gained from some of Dr. Mikota's research is already being shared in the diagnosis and treatment of other elephants worldwide. We are very excited about the prospects for improved captive elephant health and the contribution our program can make.

## New Staff and Internship Programs

In 2007 the Sanctuary implemented several significant staff programs. First, a scholarship intern program. This program provides an opportunity for enthusiastic caregiver candidates, not yet qualified for an entry-level position, to gain valuable experience. Scholarships are awarded for six month periods. We awarded three scholarships in 2007, and our elephants benefited tremendously.

The Sanctuary also made an investment in management development and continuing education. All supervisory staff, including lead caregivers and the office manager, participated in a multi-day program whose goal was to improve communication and increase supervisory skills. The Sanctuary also kicked-off its continuing education program by sending two senior caregivers to an animal welfare conference. This commitment to staff development is essential in supporting our solid and rapid growth.

Courtesy Manuel Zeitlin Architects



*Our new Welcome Center facility in downtown Hohenwald, scheduled to open in 2008, will house an Education Gallery, Gift Shop and the Sanctuary's administrative offices.*

## Education Gallery & Welcome Center

In May of 2007, The Elephant Sanctuary purchased two buildings on Main Street in Hohenwald, TN for the purpose of creating a downtown Welcome Center—Phase I in the development of The Elephant Sanctuary's Learning Center. This Welcome Center will contain educational exhibits, a visitor's center, small theatre and a gift shop, as well as the Sanctuary's new administrative offices.

For this project, the Sanctuary has partnered with the city of Hohenwald to help revitalize their downtown district, helping to preserve its historical features while attracting new visitors and commerce. Through this partnership, Manuel Zeitlin Architects has not only designed an innovative space for our Center, but has provided complimentary plans for a facelift of the city's public parking lot and public arcade. The city will be financing their renovations which are both adjacent to our proposed facility.

A groundbreaking event took place in October 2007 to announce our plans, and we were thrilled to see such a wonderful community turnout. It is

heartening to see attitudes begin to shift, with more and more people realizing that "seeing" an elephant has clearly not been successful in either public education or species conservation in the wild. Our challenge with the Education Gallery & Welcome Center is to create an experience where visitors and supporters will walk away with a greater understanding and respect for elephants, without having compromised the freedom of one single elephant.

In accordance with our respect for nature, we are pleased to be designing this Center with "green" values in mind using recycled and energy-efficient materials wherever possible. If all goes well, we hope to become the first "LEED" (Leadership in Energy and Environmental Design) certified facility in both the city and county. Construction and a major capital fundraising campaign will begin soon, with plans to have the new facility open and operational sometime later this year. The Sanctuary is currently seeking corporations and organizations interested in helping to underwrite this project. Please contact us if you would like to become a sponsor.

# Program Areas

**The Elephant Sanctuary** encompasses 2,700 acres, making it the nation's largest natural habitat refuge developed to meet the special needs of elephants. Since it was founded in 1995, twenty female Asian elephants and three female African elephants have called the Sanctuary home.



*Video teleconferencing continues in schools across the country.*

**Education** about elephants and the crisis they face is a critical component of The Elephant Sanctuary's mission. We reach millions of people annually through the internet, video teleconferencing, live streaming video, the media, and documentaries about our work. Sanctuary staff also conduct outreach education in the U.S. and overseas.

**Research** Experts are conducting research on Post Traumatic Stress Disorder in elephants, and the Sanctuary is at the forefront of these efforts. The data we compile and share is essential for diagnosis and treatment of this recently-recognized disorder in elephants.

**www.elephants.com** Our award-winning web site provides a wealth of information about our work and the status of elephants around the world. Our site offers program descriptions and updates, downloadable educational materials, and links to current elephant welfare information.

[www.tappedintoelephants.com](http://www.tappedintoelephants.com) uses live streaming video to provide an around-the-clock window into Sanctuary life enabling visitors to observe the elephants without disturbing them. It continues to attract over 20 million hits a year.



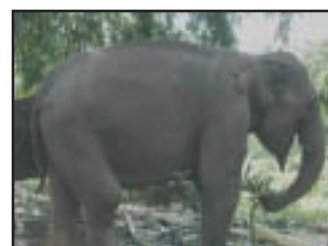
**Volunteer Day Program & Internships** In 2007, hundreds of volunteers participated in our Volunteer Day Program. The Volunteer Day Program allows individuals and groups to be directly involved in the Sanctuary's growth while immersing themselves in an inspiring wilderness setting. The Sanctuary's ongoing Internship Program also remained active. Designed to instill respect for elephants and for all life, the Internship Program also provides the Sanctuary with much-needed assistance. Interns and volunteers work under the guidelines of the Sanctuary's non-invasive management philosophy, which restricts them from direct physical contact or verbal interactions with the elephants. At the Sanctuary observation is the key to learning. Silence is encouraged while in the presence of elephants, challenging all to quiet their voice and learn through their eyes, ears, hearts, souls and minds.

# International Elephant Assistance

*The Elephant Sanctuary's international focus continues to support programs that successfully benefit captive and wild elephants in their native lands.*



*An emaciated elephant receiving help in Northern India.*



*Dr. Sarma sent us these before (L) and after (R) photos of Laxmi Mala in India. We are thrilled her emergency TB treatment appears to have been successful.*

## Mobile Elephant Care Program

This year the Sanctuary continued its support of this highly successful Mobile Elephant Care Program in India. This collaborative effort was created by Dr. Christy Williams, elephant researcher, and The Elephant Sanctuary. It provides free medical treatment from a licensed veterinarian for elephants that would otherwise go without, and has proven to be extremely beneficial for captive elephants in need of routine or emergency medical care.

After receiving an urgent email from Dr. Kushal Sarma (The head veterinarian on our Mobile Elephant Health Care Program), The Elephant Sanctuary agreed to sponsor the medical treatment and care of a 40- year old TB-positive Asian elephant named Laxmi Mala. Funding from the Sanctuary supplemented her treatments and we were pleased to receive a recent report that Laxmi Mala is showing great improvement and is now testing negative for TB.



*The Captive Elephant Health Care Program*

## The Elephant Nature Park

The Sanctuary continues to lend its support to Thailand's only refuge for abused and abandoned Asian elephants. For more information, visit <http://www.elephantnaturepark.org>

## Expanding our boundaries

As we entered our thirteenth year, we realized that what started as a modest attempt to help a few needy elephants has grown to encompass the welfare of captive elephants worldwide. The Elephant Sanctuary's ability to impact the lives of captive elephants here and abroad brings us hope that one day captive elephants will live a healthier existence in more natural surroundings. If we will not allow this ancient species true freedom by protecting their homelands, then providing them with a reasonable facsimile is mandatory. We are grateful for the vital support from so many people who have helped us come this far, and we hope you will continue the journey with us as we work to serve this magnificent species.

# Accomplishments in 2007

## Resident Elephants

---

- Accepted Dulary, a 43-year-old Asian elephant retired from the Philadelphia Zoo

## Land and Facilities

---

- Completed 15,000 feet of additional corral fencing for all three habitats
- Dug additional ponds in Asian and African habitats
- Dug three new wells in expanded Asian habitat
- Purchased two buildings in downtown Hohenwald to be renovated into the Sanctuary's Education Gallery/Welcome Center

## Research

---

- Created a small veterinary lab for the Elephant Health and Welfare Institute
- Continued to support our mobile health care clinic for captive elephants in northern India
- Collected details for behavioral analysis comparisons of wild and captive elephants
- Continued to collaborate with experts in the field to research for a blood test to determine the TB status of elephants
- Assembled data used to study emotional health in elephants
- Collaborated with experts in the field researching alternative treatments for osteomyelitis in one 62-year-old elephant
- Presented expert witness testimony to numerous governmental agencies and municipalities nationwide regarding a captive elephant's need for space

## Financial

---

- Paid off all land debt, including the 1800-acre expansion, construction of two barns and 20 miles of fencing
- Sent a second successful Elephant Care Appeal, raising over \$325,000 in the last quarter of the year
- Awarded a four star charity rating for 3rd year in a row by Charity Navigator

## Staff

---

- Began a scholarship intern program and awarded three scholarships
- Added two additional caregivers to our elephant care team
- Continued work with a team of veterinarians to oversee the treatment of elephants infected with tuberculosis

## Awareness/Advocacy

---

- Raised awareness about the plight of captive elephants among federal employees through the Animal Charities section of the Combined Federal Campaign
- Underwrote supplemental feeding of captive elephants in Thailand
- Sponsored the medical treatment and care of a 40-year-old TB-positive Asian elephant in northern India
- Supported PAWS rescue of Maggie, Ruby, Nicholas & Gypsy
- Continued to work with disease experts and state officials to identify the degree of risk posed by elephants with the human strain of tuberculosis
- Provided an online resource for elephant care and welfare issues
- Completed and renewed a one year consulting arrangement with renowned elephant specialist Susan Mikota, DVM
- Distributed three Sanctuary newsletters, twelve monthly electronic newsletters and our second year-end appeal
- Published fifth annual report
- Started distribution of a weekly online internal staff newsletter which was publicly distributed as of July
- Launched a non-profit video channel on YouTube
- Produced and released two new DVDs; "Dulary's Homecoming" and "all of...Our Girls...so far"
- Partnered with Lewis County Chamber of Commerce and the City of Hohenwald on Education Gallery & Welcome Center Groundbreaking Ceremony
- Increased outreach activity during October Elephant Awareness Month to include speaking engagements and weekly outreach activities including Frist Museum and Strand Theatre
- Increased our membership to over 70,000
- Inventoried and copyrighted Sanctuary intellectual property
- Made presentations to all grades of Lewis County Schools and awarded two scholarships to High School Seniors
- Featured in/on *CBS News Sunday Morning*, *ABC's 20/20*, *PBS: The Best of Nature*, *Reader's Digest*, *Hallmark Magazine*, *The Chicago Tribune*, *nytimes.com*, *The Associated Press*, *CBC News*, *The Memphis Flyer*, *The Oregonian*, *The Gainesville Daily Register*, *Humane News*, *The Animal World*, *Library Media Connection*, *The Sun*, *The Northwest*, *The Daily Times*, *The Eagle-Tribune*, *The Star-Telegram*, *The Seattle Times*, *At Home Tennessee Magazine*, *Metropolitan Home*, *The Anchorage Daily News*, *The Paw Print*, *Library Media Connection*, *BookPage*, *IDA Magazine*, *Tennessee Treasures*, *The Arkansas Times*, *The Philadelphia Inquirer*, *The New London Day*, *The Nashville Scene*, *The Latham Letter*, *WSMV*, *WKRN*, *WZTV*, *WTVE*, *WNIN*, *The Philadelphia Daily News*, *New Canaan Magazine*, *Westport Magazine*, *Brentwood Life*, *Sailing*, *The Lewis County Herald*, *The Decatur Daily*, [www.solutions-site.org](http://www.solutions-site.org)

# Corporate Officers & Directors

**Carol Buckley** is co-founder and Executive Director of The Elephant Sanctuary. She oversees the care of the elephants in the quarantine facility, consults internationally on elephant care and management, manages administrative staff, facilitates elephant acquisitions, and assists in the development and implementation of educational programs and materials for the public. She is also a well-known speaker on elephant care.



**Scott Blais** is co-founder, Operations Director and the primary caregiver for the Founding Herd of Asian elephants in the newly expanded habitat. He is also Vice President of the Board of Directors. Scott has been instrumental in the design and construction of the Sanctuary's continually expanding facilities. He also aids in the development and implementation of organizational policy, on-going staff training and public education.

**Sandra Estes** serves on the Board of Directors. A Hohenwald, Tennessee native, she is a Financial Service Representative for Regions Bank. In addition to her work on behalf of the Sanctuary, she is involved in many other community organizations including the Lewis County Education Foundation.

**William Schaffner** serves on the Board of Directors. Dr. Schaffner is an infectious disease professor at the Vanderbilt University School of Medicine and a notable consultant on public health policy and communicable disease control. He lives in Nashville, Tennessee.

**Leslie Pon Tell Schreiber** serves on the Board of Directors. Before retiring, Leslie served as Co-Director of Ontario's Bowmanville Zoo and was the Instructor's Assistant Director of Moorpark College's Exotic Animal Training & Management Program. She lives in Tiburon, California.

**Janice Zeitlin** is President of the Board of Directors and serves as Board liaison for the Executive Council. In addition to her decade-long commitment to the Sanctuary, she is a volunteer for many community and professional organizations. She owns Zeitgeist Gallery and lives in Nashville, Tennessee.



## Executive Council

Albert Ambrose  
Nashville, Tennessee

Katy Chudacoff  
Franklin, Tennessee

Betsy Dodd  
Franklin, Tennessee

Kate Elliott  
Hohenwald, Tennessee

Debbie Emory-Utzig  
Hermitage, Tennessee

Douglas Henry  
Nashville, Tennessee

Judy Jones  
Nashville, Tennessee

Lois Knight  
Nashville, Tennessee

Judith Newby  
Nashville, Tennessee

Mary Anne Nyquist  
Nashville, Tennessee

Vera Rusak  
Nashville, Tennessee

Rosanne Sietins  
Dickson, Tennessee

Carolyn Stalcup  
Brentwood, Tennessee

Susan Stewart  
Nashville, Tennessee

Charlie Trost  
Nashville, Tennessee

Janet Turner  
Hohenwald, Tennessee

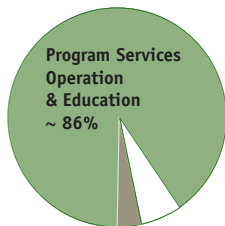
Patsy Weigel  
Nashville, Tennessee

Janice Zeitlin  
Nashville, Tennessee

## Summary of Financial Activities 2006

Public Support & Revenues	
Public Support	3,849,478
Other Revenues	305,437
	<hr/>
	<b><i>Total Public Support and Revenue</i></b>
	<b>4,154,915</b>
Expenses & Losses	
Program Services	
Shelter and Care	1,466,482
Education	240,810
Research	<u>73,536</u>
<i>Total Program Services</i>	1,780,828
Supporting Services	
Management and General	196,733
Fundraising	<u>94,667</u>
<i>Total Supporting Services</i>	291,400
	<hr/>
	<b><i>Total Expenses</i></b>
	<b>2,072,228</b>
Increase in Net Assets	2,082,687
Net Assets – beginning of year	9,128,381
Net Assets – end of year	<b><u>\$11,211,068</u></b>
	<i>(Audited)</i>

### Expenses ~ based on 2006 audited financial records



Management & General ~ 9%  
Fundraising ~ 5%

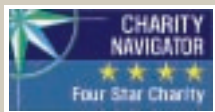
*Operation of The Elephant Sanctuary would not be possible without the help of our 73,793 members, volunteers and donors who support us at every level.*

## Support

### Major Donors

AHIMSA Foundation  
Animal Welfare Trust  
Dean & Alison Barr  
Michael Berry  
The Body Shop Foundation  
Estate of Fredrick H. Boocks  
Timothy & Jennifer Buckley & Family  
Leslie Christodouloupoulos  
Chrysalis Foundation  
Richard Cohen  
Estate of George Conner  
Estate of Gertrude Jane Huffman  
Gary Fink  
Mary Fleming  
George B. Storer Foundation, Inc.  
Katharyn Alvard Gerlich  
Gloria Gray  
James A "Buddy" Davidson  
Charitable Foundation  
Jan Hayden Estate  
Yvonne M. Katerman  
Kathryn Maines Ingle Estate  
Frank. Stan Keahey

Lee Ann Kozak  
Pamela W. Logan  
Lufkin Family Foundation  
Malle Charitable Foundation  
Mary Cooney & Edward Essl Foundation, Inc.  
Ann S. & John C. Mathews  
Newman's Own Foundation  
NIB Foundation  
Joe W. Posey  
Ruth H. Klein Trust  
Jody Stickney  
Carole Strauss  
Farid Suleman  
T & T Family Foundation  
The Ark Watch Foundation  
The Michele and Agnese Cestone Foundation  
The Franklin Philanthropic Foundation  
The Gretchen Wyler Separate Property Trust  
The Maltz Family Foundation  
The Pattee Foundation, Inc.  
The Plum Foundation  
The Selma Oritt Foundation, Inc.  
The Serengeti Trading Company, LLC  
Estate of Susan McConnell West  
Carolyn Yearwood



*For the third consecutive year The Elephant Sanctuary has received a 4-star rating from Charity Navigator, America's largest independent evaluator*

*of charities. Only 9% of the charities rated by Charity Navigator have received at least three consecutive 4-star evaluations, differentiating The Elephant Sanctuary from similar non-profit organizations in its efforts to operate in the most fiscally responsible way possible. For more information, please visit [charitynavigator.org](http://charitynavigator.org).*



*Meets all 20 BBB Charity Standards:*



*Scott visits Bunny, Shirley, Sissy and Winkie in the new Asian habitat.*

**Benefactors (\$5,000 – 9,999)**

Ahali Elephants  
 Shirley J. Ashley  
 Jim & Jill Carlberg  
 Terry Chung  
 CME Group  
 Dr. Charles F. Colao  
 Community Foundation of  
 Greater Chattanooga, Inc.  
 Joyce Dennehy  
 Virginia Foster  
 Eben Gilkenson  
 Mr. & Mrs. Steven Goldby  
 Christa Hallett  
 E. Stanley Hobbs, Jr.  
 Audrine Honey  
 Melissa Humphreys  
 I. N. & Susanna H. Van Nuys  
 Foundation  
 Pamela Louise Liss-Burdett  
 Kathy Lynch  
 Lynne Cooper Harvey Foundation, Inc  
 Cherie & Kenneth Mason  
 Victor Menayan  
 Patricia Okieffe  
 Jonathan & Meg Ratner  
 ReZoom, LLC  
 Anne L. Schepler  
 Herbert & Jean Schulman  
 The Conroy Family Foundation  
 The Landis B. Gullett Charitable Trust  
 The Norman Raab Foundation  
 The Philadelphia Zoo  
 Tennessee Department of State  
 Marvel Thiel  
 Deborah Thompson  
 Sonny & Lee Tolbert  
 Maurice Van Hende  
 Lucille Walter  
 Judy & Dave Winters

**Patrons (\$1,000 – 4,999)**

Richard Abbott  
 Mitchell Albert  
 AMB Property Corporation  
 Rob Beers & Danicia Ambron  
 American Express Foundation  
 Harold M. Anderson  
 Animal Welfare Foundation  
 John T. Annear  
 Gabriel E. Arechaederra  
 Arthur Ashley Williams Foundation  
 Marvin Schwinder, B&G Foods  
 Michelle Babu  
 Patricia Backer  
 Frederic & Beth Bailey  
 Mary E. Baker  
 Bank of America Matching Gifts  
 Phyllis Barlow

Shirley B. Barnes  
 Carol C. Bauer  
 Michael Bauer  
 Tanya & Michael Bauer  
 Benjamin J. Rosenthal Foundation  
 Julia & Budd Bishop  
 Robert & Kelli Black  
 Eunice & Irving Bloom  
 Barbara Borchardt  
 Kathi Jane Bowen  
 Edna Bowman  
 BP Matching Fund Programs  
 Tory Braden  
 Clare Breidenich  
 David M. Brown  
 Bonnie Lee Bryant  
 Amity Bryson  
 Mary Buckley  
 Penny McIntyre Burgess  
 Patricia Cade  
 Jean Caldwell  
 Kelly Callen  
 Mary-Jean Cameron  
 Kathleen Carlson  
 Susan Carrick  
 Pat Jessup, Cars 4 Causes  
 Carson Family Foundation  
 Dr. & Mrs. Patrick Cassidy  
 Ed & Karen Champoux  
 Frank Hu & Susie Chang  
 Betty and Thomas Chears  
 Anthea Christian  
 Clara Cist  
 CMB Foundation  
 Nancy Cohen  
 Rupert Colmore  
 Patricia Conkie  
 George & Claire Conklin  
 Donna Conyers  
 Cooper Family Foundation, Inc.  
 Dr. Mary Copelin  
 William Rusak, Corrections Corp of America  
 Steve Cottrell  
 Linda Ray Cross  
 Richard & Deborah Cullotta  
 Custom Direct, LLC  
 Joan M. Davenport  
 David & Rosemarie Siegel Fund  
 Ann L. Davidson  
 Mary De Voe  
 Pamela Brady Deegan  
 Patricia Delano  
 Annamarie Denney  
 Lee Dillon  
 Dine Family Foundation Fund  
 Brayd Bryson & Linda Dineen  
 Betsy Dodd  
 Madeline & Charles Dodd  
 Diane R. Dohm

Doran Family Foundation  
 Peggy A. Dorsten  
 Laura Renee Dougherty  
 Michael J Dougherty  
 George B. Duke  
 Priscilla Duffield  
 Dun Foundation  
 Hugh Renwick Dunlap  
 Nancy Ebanks  
 Edelson Foundation, Inc.  
 Jim, Jorgine & Ben Ellerbrock  
 Paul & Patricia Ellsworth  
 Larry & Karin Emrich  
 Faassen-Cho Family Fund  
 Elisa Fasulo  
 Julia Feliciano  
 Julie A. Fenimore  
 Waltraud D. Finch  
 Fine Woodwork  
 Virginia Floyd  
 William W. & Lori A. Forbes  
 Mary Price Franco  
 Gina Clark, Shettler Elementary, Fruitport  
 Community Schools  
 Becky Gafford  
 Joe & Phran Galante  
 Jonathan Gans  
 Joanne Gauzens  
 Letty-Lou Gilbert  
 J.C. & S. Gilchrist  
 Nancy Gilliam  
 Jane Gilman  
 Mark & Jessica Good  
 Betty Jane Goodhart  
 GoodSearch  
 Google Matching Gifts Program  
 Tracey Gordon  
 Monika & Peter Greenleaf  
 Patricia Griffiths  
 Guilford Publications, Inc.  
 Ruth L. Gunter  
 Caroline H. Hall  
 Tavenner Finlay Hall  
 Linda Hallinan  
 Edward Harris  
 Kevin Stein, HAVE, Inc.  
 Robin Heard  
 Lynn Heller  
 Helmut & Candis Stern  
 Animal & Bird Welfare Fund  
 Rich Hendele  
 Ashley & Douglas Henry  
 Elsianna Henry  
 J. W. & Terese Hershey  
 Frank & Nancy Hirshfield  
 Carrie Hoffman  
 Timothy Hogg  
 Doug & Jennifer Holler  
 Maureen Hong

Richard & Annemarie Hoopis  
 Dawn D. Hoover  
 HP Company Foundation  
 Humuh Monastery  
 Hunt Family Foundation  
 Maxine Hunter  
 Hutchison Family Charitable Fund  
 Elizabeth Jack  
 Dr. & Mrs. Harry R. Jacobson  
 Jewish Communal Fund  
 Rebecca Lynne Johnson  
 Sheila Johnson  
 Bryan & Kathryn Jue  
 Agnes E. Kantanen  
 Ira C. Kaplan  
 Dr. Mary Ann Keenan  
 Rachel Kelley  
 Robert C. & Mary M. Kelly  
 Larry & Joylen Kent  
 Vasudevan Kidambi, M.D., P.A.  
 Roxanna Klimovich  
 Rose M. Kuhn  
 Shannon S. Lamb, M.D.  
 Jim & Catherine Lancaster  
 Frank & Agnes Elisabet Landrey  
 Alice C. Lauyer  
 Nicole Lawrence  
 Gerri & Mary Lazowski  
 Calvin & Marilyn Lehw  
 Thomas & Sherry Lehman  
 Mary Jane Leland  
 Daniel & Elaine Leonard  
 Sandy Lerner  
 Lewis Brounell Charitable Trust  
 Anita Linke  
 Alice Lipska  
 Lynn Litchy  
 Dr. Lynn Lofthouse & Grandsons  
 Dwight E. Lowell, II  
 Leslie W. Lowry  
 Teri Ludwig  
 C. Catherine Lyons  
 Amal Maalouf  
 Jessie MacBean Estate  
 Susan P. MacFarlane  
 Kumiko Shimizu & David Magnan  
 Margaret Calkins Charitable  
 Foundation  
 Marian Foundation  
 Valerie Marini  
 BGen. Bruce Matheson, USMC  
 Bonna Mathews  
 Stephen & Susan Mathews  
 Sascha Matschinsky  
 Simon McCain  
 Rochelle & Mark McCormick  
 Julie J. McCown  
 Patricia A. McKenna  
 Stacey McLaughlin

*Patrons (continued)*

Robert B. & Mary D. Medina  
 Michael & Sheila Medlar  
 Mellon Trust of New England, N.A.  
 Merrill Family Foundation, Inc.  
 Microsoft Giving Campaign  
 Vicki Mills  
 Elsie P. Mitchell  
 George and Kaye Mitchell  
 David Uhlik & Susan Mondabaugh  
 Nikolaos Monoyios & Valerie Brackett  
 Susan & Robert Montler  
 Fay Morris  
 Mary Jean Morris  
 Anne M. Mowatt  
 Jean Murphy  
 Kevin E. Murthy  
 Purna Murthy  
 Mohan Nair  
 New Canaan-Darien Magazine  
 Terry Newell  
 Chrystine Nicholas  
 Betty Nichols  
 Mary Anne & Steven Nyquist  
 Rick & Laura O'Callaghan  
 Deborah & Charles Ocheret  
 Kevin & Vivian O'Connell  
 Thomas P. & Patricia A.  
 O'Donnell Foundation  
 Sue Oliver  
 Lane E. Olson  
 Once For All, Inc.  
 Angel O Padilla  
 Reina Paff  
 Pam Lewis Foundation  
 Pamela Weinzapfel Charitable Fund  
 Shirley H. Parsons  
 Colleen Perrin  
 Ellen Perry  
 Barbara S. Peters  
 Ellen J. Plumtree  
 Walker Pond  
 Kara Powis  
 Elizabeth W. Pratt  
 Prince Charitable Trusts  
 Principle Building Group, Inc.  
 Janet Putney  
 Elizabeth Radecker  
 Regions Bank  
 Brenda Richardson

Doug & Juliet Rieth  
 Karen Ringsred  
 River Forest Women's Club  
 Wendy Roberts  
 Paul & Mildred Robinson  
 Alan Ross  
 Vera & William Rusak  
 Ruth Covo Family Foundation  
 Harold Schessler  
 Dr. Donald Schnell  
 Marjorie Schott  
 Margot D. & James L. Schwab, Jr.  
 David & Phoebe Segal  
 Diane Sembrot  
 Kathleen Sheehan  
 Katherine J. Shelton  
 John & Barbara Shepler  
 Charles & Nancy Shuman  
 Elizabeth B. Simon  
 Richard Skalsky  
 Carl & Lovie Mae Smith  
 Patricia Smith  
 Joe & Helen Sniezek  
 Joseph and Joanne Sowell, III  
 Norman Spieler  
 Ms. Peggy Gyra - 4th Grade Class,  
 St. Edmund School  
 Mildred Stahlman, M.D.  
 Dr. Pamela A. Stanton  
 Rhonda Stoup  
 Sylvia Strike  
 Barbara Smith & Daniel Sullivan  
 Jocelyn Sunderland  
 Andrew Sussman  
 Margaret Ellen Swain  
 Barbara Taller  
 Jamie Taylor  
 Linda & William Taylor  
 Margaretta Taylor  
 Jan L. Taimourian  
 Kalyani Thangaraj  
 The Alexander Abraham Foundation  
 The Artwell Foundation  
 The Ayudar Foundation  
 The Baobab Fund  
 The Bernard Aronson Foundation  
 The Capital Group Companies  
 The Craig R. & Julie N. Oechsel  
 Charitable Fund  
 The E. Newbold & Margaret  
 DuPont Smith Foundation

The Estate of H. Clappier  
 The Francis T. Harris Foundation  
 The Gifford Foundation  
 The Hartland Foundation  
 The Kaufman Family Foundation  
 The Stephen & Susan Framarb Foundation  
 The Sulica Fund  
 The UPS Foundation  
 Leslie Thomas  
 Tides Foundation  
 Martha L. Till  
 Curtis Tomlin  
 Trico Family Foundation  
 Ridgely Trufant  
 Helene Tyson  
 United Way of the Bay Area  
 Raymond Hopper & Krista Van Laan  
 Katherine M. Vande Logt  
 Joan Venegoni  
 Ray & Nancy Vercammen  
 Victoria Heil & Eric Victoria Heil & Eric  
 Raefsky Advised Fund  
 Vista Makai Foundation, Inc.  
 Wachovia Foundation Matching  
 Gifts Program  
 Linda A. Wagner  
 Enid Wagstrom  
 Wallack Family Foundation, INC  
 Rosemary & Bud Walters  
 Elaine Ward  
 Josephine & William Wardle  
 Sheila Gordon Wasserman  
 Dr. Gloria B. Weintrub  
 Lisette C. Weishaupt  
 Ann D. Welch  
 Deanna Wenstrup  
 Lydia Wentz  
 Joan Werner  
 Mary & Barry Werner  
 Christine West  
 Elena West  
 Vera & Ross Whistler  
 Jeff & Kristy Williams  
 Larry Williamson  
 Joan Willis  
 Mary L. Winer  
 Dennis Wise  
 Robin Wojcik  
 Casey Strumpf & Philip Wolfson  
 G. Ramsey Yoder  
 Zazzle  
 Elinor Zetina  
 Susan Zoltek

Lauranne Buchanan  
 Kevin Reilly & Sheila Burns  
 Victoria Bush  
 Doris Cain  
 Janice Calkin  
 Gloria Carr  
 Clint & Patricia Carter  
 June Carter  
 Kent Magnuson & Laura Cashore  
 Tamarah Ortiz Castaneda  
 Cyndie & David Chen  
 Jim & Marjorie Childers  
 Julie and William Clark  
 Barbara Clarke  
 Karin A. Coakley  
 Cindy Cole  
 Eunice Colmore  
 Brian & Laurie Conroy  
 Cooper Family Foundation  
 William Cowan, Jr.  
 Sherry & Stanley Crowder  
 Jean Cullen  
 Jim L. & Kristin A. Day  
 Lisa DeCesare  
 Stacie & John Dement  
 Michele M. Dion  
 Holly & Joel Dobberpuhl  
 Peggy Dorsten  
 Thomas D. & Renee B. Duane  
 Christine Dustin  
 Ann Tutwiler Dwyer  
 Edward Gorey Charitable Trust  
 Susan Edwards  
 Catherine Elliott  
 Tim Utzig & Debbie Emory-Utzig  
 Dr. & Mrs. Steven Eskind  
 Mr. & Mrs. Robert Fay, Jr.  
 Glenn Felner  
 Ali R. & C. Lee Ferrell  
 Barbara A. Fisher  
 Chip & Annette Fox  
 Elizabeth Friess  
 Holly & Vince Gallagher  
 M. Katie Gillis  
 Florence & Steven Goldby  
 Larry & Marie-Annet Goldsmith  
 Paul Swedenburg & Nancy Gordon  
 Martha Graef  
 Beth Graham  
 Marjorie Neale Griffith  
 Pauline Groh and Thelma Oberholtzer  
 Elizabeth L. Grote  
 Sara Gruen  
 Linda Guinn  
 Margaretann & Douglas Haag  
 Nancy Hair  
 Susan & Jim Hammersley  
 Thomas & Julie Hanes  
 Linda Harper  
 Kay Hartgrove  
 Jack Ross & Shirleyann Haveson  
 Valerie Hughes & Stephen Hays  
 Kathryn Head  
 Angelica Heath  
 Jim & Robin Herrnstein  
 Alison D. Hildreth  
 Judy Hnilo  
 Linda S. Hodges  
 Hubert N. Hoffman III  
 Elizabeth W. Holden  
 Grace M. Holden  
 Dean Shumate & Lela Hollabaugh  
 Michelle D. Holmes  
 Horatio B. & Willie J. Buntin Foundation  
 Deborah Robinson & Harold Horwich  
 Vernon D. Howard  
 Alexandra Huck  
 Debra Hull  
 Mr. & Mrs. W. S. Hyland  
 Dr. Francis Roberto Ibarra  
 Charlene & Les Inglis



*Tange and Zula received a brand new pond this year, although they probably envision it more as the ultimate "mud hole spa!"*

*VIP Patrons*

Karen & Leslie Allen  
 Betty Lou & Dick Almeida  
 Wayne & Donna Ambrous  
 Ark Trust - HSUS Hollywood Office  
 Arthur C. Murray Charitable Found.  
 Ann August  
 Sally & Ronald Ball  
 Russell C. & Janet Barnett  
 Dean & Alison Barr  
 Lydia Morales & Carol Bartunek  
 Michele Becker  
 Jordan & Sarah Berlin  
 Debbie & Nick Berman  
 Barbara Betke  
 Edgar & Kathryn Beyn  
 Ann H. Bissell  
 Claire & Norm Blais  
 John & Marilyn Blake  
 Steven Bohleber  
 Joan and John Borders  
 Cheryl & Gary Bosak  
 Tory Braden  
 Robert Tannert & Kay Bradley  
 Warren W. & Esther C. Brandt

## VIP Patrons (continued)

Richard Inlander  
Elizabeth Jackson  
Linda Jasper  
William & Katie Joel  
Helen Joffrin  
Vicki Johnson  
Dario Franchitti & Ashley Judd  
Allison Kelly  
Ann Kiesel  
Tim Muench & Trish Kirk  
Dorothy Kirsch  
Kathryn Arnold & Michael Kleeman  
Larry & Carol Klevans  
Randolph Knight  
Dr. William Schaffner & Lois Knight  
Gayle E. Koan  
Randolph Kohler  
Nicki Kravcisin  
Tom Kubit  
Beth Kubly  
Carol M. Lane  
Marcia P. Lane  
Sharon Langford  
Robert & Jennifer Larkin  
Ted & Gloria LaRoche  
Rosemary & Ted Lassiter  
Sarah Laurenson  
Eduardo Antonio Leal  
Bettie B. Lee  
Jeanne LeHardy  
Pamela Lewis  
Curtis & Nancy Linder  
Lynn Lovett  
Amal Maalouf  
Diane Morris & Susan J. Mac Donald  
Merrick Morgan & Tony Madsen  
Emily Magid  
Barbara Magin  
Drs. Paula & Walt Mahoney  
Diana Manter  
Victoria Marone  
Donna J. Marshall & W. Higgins  
Alan Dorsey & Leslie Maslow  
Doris Nakamura & Stanley Masumoto  
Patricia Matthews  
Cory Mauldin  
Rochelle & Mark McCormick  
Tim & Kate McCullough  
Carolyn McIntyre  
Stephen & Sally McVeigh  
Sandra Mickelson  
Christie Lee Miller  
Cynthia Miller  
Trudy Miller  
Margaret A. Montana, M.D.  
Brittany Mora  
Hans & Marcia J Mosimann  
Donald & Geraldine Mucha  
Pamela Myers  
Frances Newell  
Leta Newgarden  
Paige Rense Noland  
Douchka Noren  
Lisa Northrup  
Marne K. Olson  
Peggy Ornelas  
Margaret E. Otto  
Tom Sharples & Patricia M Panaia  
David & Susan Pettit  
Ron & Linda Pickard  
William Porter  
Maureen & Jerry Powers  
Sandra Prangle  
Susan Pulling  
Patti & Harry Ragsdale  
Linda & Bill Randolph  
Jane Ratchford  
Ellen Fuller & Bradly Reed  
Rebecca & John Reed, III

Christine Rehnke  
Christopher & Vicki Ray Richard  
Barbara Tomkins Ridgely  
Rochelle M. Riebau  
Karen & Stanley Roberts  
Heber & Fran Rogers  
Richard Rubin  
Doreen Rudnick  
Marilie Sage  
Marilyn Schroeder  
Ruth Scroggin  
Luke & Kim Seabrook  
Catherine & George Sebastian  
Cynthia Kravitz & Jerry Sell  
Michele Ferketich Serratore  
Laura & Joel Shellhase  
Hank & Weezie Sherwood  
Cynthia J. Shryock  
Michael Dolenga & Heather Siddon  
Rosanne L. Sietins  
Linda H. Simpson  
Gail Smith  
Greta Green Smith  
Jonathan and Mary Ann Smith  
Judy & Gary Smith  
Kevin & Ramona Smith  
Marcella Smith  
Catherine M. Smolich  
Janis Ian & Pat Snyder  
Ruth Snyder  
Frances Stevenson  
Jenna & Michael Stewart  
Victoria Strong  
Kathryn Szydowski  
Sue & Darryl Tannenbaum  
Kenneth & Judith Taylor  
Robert & Kathryn Taylor  
The Dry Family Charitable Foundation  
The Howard & Ursula Dubin Foundation  
The Maue Kay Foundation  
John B. Thomison, Sr.  
Alana I. Thorpe-Bender  
Nancy Tocci  
Tim Mather & David Trautvetter  
Jean & Rich VanCamp  
Faye and Richard Varsolona  
Esther & Christine Vogeley  
Mary, DeeDee & Alex Wade  
Starling Walter  
Rosemary Walters  
Russell Irwin & Margaret Watts  
Robert & Diane Weeks  
Pamela Weinzapfel  
Ted & Sheila Weschler  
Phil and Ellen Whitaker  
Frederick & Audrey White  
Samara & Elvin Whitesides  
John Cochran & Jo Williamson  
Sean & Tammy Wolfort  
Youth Development Foundation  
The Zeitlin Family

## Corporate Sponsors

Abaxis  
B & G Foods  
Business Wire  
Emma E-mail Marketing  
Green Mountain Gazebo  
TVA  
Manuel Zeitlin Architects

## Corporate Supporters

Larry Bernstein,  
Natural Holistic Health Care  
Sharon Callahan, Anaflo  
The Cloth Bag Company  
HAVE, Inc.



*"Spinster Sisters" Shirley and Bunny have developed an endearing friendship since Jenny's passing.*

## In Kind Donors

Karen Adams  
Michael Adams  
Paula & Jim Adwell  
Lorraine Agee  
Julia N. Allen  
Sharon Callahan, Anaflo  
Shirley J. Ashley  
Stella Askins  
Ann August  
Pamela & Jim Austrich  
Marvin Schwinder, B&G Foods  
Babeskin Bodycare Inc.  
Mary Baker  
Donna S. Bass  
Margaret Beckerman  
John & Barbara Beltz  
Michael Berry  
Marianne Bessey  
Claire & Norm Blais  
Scott Blais  
Barbara Borchardt  
Joyce Boswell  
Margot Bowen  
Robert Tannert & Kay Bradley  
Jung Brady  
Linda Brainard  
Judy Bratis  
Steven Braverman  
Mary Breckenridge  
Bridgestone/Firestone, Inc Trust  
Sonja Childress, Brentwood  
Family YMCA  
Carol Bresnay  
Mark & Shadden Brock  
Amy Brooks  
C. Don Brownlow  
Jackie Bruetting  
Bonnie Lee Bryant  
Carol Buckley  
Mary Buckley  
Charlotte Burke  
Glenda Burris  
Kathleen Campbell  
Roald Cann  
Chris Capelan  
Donna & Charlie Carroll  
Deanna Chadwick  
Airn Chamberlain  
Jeffrey Smith  
Mario and Angel Chiozza  
Chisano Marketing  
Communications

Christopher Christian  
City of Hohenwald  
Barbara Clarke  
Carol Coleman  
Donna Conyers  
Lindsey Cook  
Elise Coren  
Michelle Cornett  
William Cowan, Jr.  
Laurel Creech  
Shana Culbersson  
Chris Curl  
Andrea & Samuel Dalluge  
Katherine Davis  
Suzanne Davis  
Margo De Mello  
Bell Delores  
Debora DeStefano  
Bradt Bryson & Linda Dineen  
Betsy Dodd  
Kelly Donohue  
Diana Dralle  
Carol Durham  
Kenny & Lanette Durham  
Peg Duthie  
Juanita C. Eisinger  
Barbara Elliott  
Kate Elliott  
Karen D. Elsberry  
Grace Enlow  
Sandra Estes  
Kari Fandrigh  
Jennifer L. Fariel  
Lindsay Farley  
Morgan & Susan Fegley  
Lucia Folk  
Kathleen Forker  
Lynne & Peter Forlenza  
Denice Fortin  
Denise Fourman  
Amanda Fowler  
Stephen & Anita Meola Friars  
William Froelich  
Agnes Goshe & James G. Garrett  
Betty Gatano  
Jim & Donna Gawlas  
Marie Dixon & Wayne Gibson  
Gifts In Kind International, HP  
Gigi & Gray Glendinning  
Jim L. Gordon  
Patricia Green  
Green Hope Farm  
Green Mountain Gazebo

*In Kind Donors (continued)*

Laura Griffith  
Terry Griffith  
Marcy Guilford  
Linda Guinn  
Mary L. Guy  
Nancy Hair  
Christa Hallett  
Jennifer Hall  
Dr. Jane B. Hardin  
Brenda Harless  
Jamie Harnson  
Michael Harrington  
Joanne Hartough  
Kate Harvey  
Tommy & Tammie Haskins  
Kevin Stein, HAVE, Inc.  
Kim Hawkins  
Dr. Barbara Hayes  
Michael & Michelle K. Hayes  
Diane D. Heise  
Denise Heitmann  
Rich Hendele  
Kim Higgins  
Jerry Hinson  
Audrine Honey  
Mya E. Honeywell  
Suzanne House  
Chris Houston  
Karen Hoxie  
L. Kevin Morehead,  
Initial Point Land Surveying  
Jack Morton Worldwide  
Lynne Johnson  
Paige & Ian Johnson  
Larry, Whitney & Lindsey Jones  
Hans & Liz Jonsson  
Tanya Jordan-Iles  
Lisa Kane  
Donna Karabin  
Rhonda Keeton  
Sheila Kelley  
Allison Kelly  
Dawn Kennedy  
Larry & Joylen Kent  
Jeremy Killian  
Cheryl Kirby-Stokes  
Tim Muench & Trish Kirk  
Keri & Christopher Klaus  
Lisa Knight  
Bettina Koppers  
Laura Krasnow  
Wendy Krueger  
Marcus & Jean Kuhn  
Laura Gilbert Design  
Michelle A. LaVerdiere  
Gerri & Mary Lazowski  
Randal Lea  
Nicole Levien  
Lewis County Chamber of Commerce  
Melissa Liscomb  
Jaclyn Lockhart  
Colleen Lynn  
Ida Lyon  
Merrick Morgan & Tony Madsen  
Alexandra Mancuso  
Melissa Marshall  
Donna J. Marshall & W. Higgins  
Stephanie Martin  
Carol Mason  
Cherie & Kenneth Mason  
Ann S. & John C. Mathews  
Karen McAbee

Barbara McCarthy  
McCartney Produce Company  
Rochelle & Mark McCormick  
Lisa A. McDowell  
Joyce McIntyre  
Carolyn McIntyre  
Jenny McKee  
Sharon McKittrick  
Jacqueline Forrest, Meow Foundation  
Wendy Merrill  
Deena Metzger  
Paula Meyer  
Patti Miles  
Stacy Miller  
Marisa Miller  
Yvonne Mitchem  
Eve, Morgan & Phante Mobley  
Donna Moffly, Moffly Publications, Inc.  
Cora Moore  
Elissa Moore  
Sue Mueller  
Shirley Muleraney  
Don Garner, Nashville Rubber and Gasket  
Carolyn Ryzewicz,  
New Canaan-Darien Magazine  
Mary Anne & Steven Nyquist  
Colleen O'Connell  
Leila Oertel  
Sara Padgett  
Reina Paff  
Debra Parkhurst  
Richie Perdomo  
Donna & Jessica Peterson  
Dalvin & Melissa Pirtle  
Peter Placido, Jr.  
Ellen J. Plumtree  
Virginia Porterfield  
Prai Beauty Group  
Susan Pristash  
Ray Prusso  
Heather Pulvermacher  
Sherle Raitt  
Corinne & Jack Ramsey  
Lynne Ray  
Hohenwald RentWay  
Nancy Rhoda  
Barbara Ribinski  
Julie Rieke  
John W. Rippetoe, Jr.  
Karen & Stanley Roberts  
Wendy Roberts  
Esperanza Robles  
Maria Rodriguez  
Dr. Shermer, Runners Relief Therapy  
Sonia Saxena  
Lynnnette Schmoock  
Cathy L. Scott  
Anna Scozzari  
Nancy Shaw  
Marisa A. Shea  
John & Barbara Shepler  
Cynthia J. Shryock  
Rosanne L. Sietins  
Theresa Siskind  
Betty Jo Slater  
Debbie Smallwood  
Judy & Gary Smith  
Greta Green Smith  
Marcella Smith  
Horst Sollfrank  
Teresa E. Sonoda  
Wendy & Michael Sortino



*Minnie, Lottie, Ronnie and Debbie peacefully roam the same fields and forests the Founding Herd inhabited just two years ago. Like their predecessors, they blossom more every day in this healthy environment.*

Dave Walton, Spotland Productions  
John David Stack  
Michael Stagg  
Carolyn Stalcup  
Mel S. Stark  
Heather Stewart  
Jenna & Michael Stewart  
Jane M. Straub  
C. Stretz  
Sylvia Strike  
Stuart Products, Inc.  
Nancy Studhalter  
Barbara Taller  
Page Teel  
Mitzy & Richard Hidding, Jr.,  
The Cloth Bag Company  
The Rays  
Earleen Thomas  
Christy Thomson  
Toilet Paper World  
Charlie Trost  
David & Connie Twigger  
Julie Tyson  
US Family Inc.  
Cherie D. Valentine  
Vanderbilt Law School Intellectual  
Property & The Arts Clinic  
Melissa Vandervort  
Mary Allen Verdun  
Lisa F. Wallace  
Waller Lansden Dortch & Davis LLP  
Sarah Walton  
Maryglenn Warnock  
Henri Weems  
David Welty  
Deanna Wenstrup  
Diane Sembrot, Westport Magazine  
Sharon B. Wheeler  
Sheryl Willey  
Wine Enthusiast Inc  
Angela Wingers  
Julie Workman  
Workman Publishing Co.  
Andrea & Hannah Worsham  
Joan Wray  
Bret & Susan Young  
David & Erin Young  
Manuel Zeitlin Architects  
Master Chef J. Zeitlin  
Elinor Zetina  
Jeanine Zmigrodski  
Susan Zoltek  
Zoom Media & Marketing

*If we have inadvertently omitted your name, please forgive us. Your support is deeply appreciated.*



the  
**Elephant  
Sanctuary**  
in Tennessee

P. O. Box 393  
Hohenwald, Tennessee 38462  
931-796-6500 x1#  
931-796-1360 (fax)  
elephant@elephants.com  
www.elephants.com

*To improve the lives of captive elephants, please contact your legislators.*