

*Elephants are the keepers of ancient secrets,  
for they walked the world when it was new.*



# The Elephant Sanctuary<sup>®</sup>

*In Tennessee*

ANNUAL REPORT 2005

The nation's premier natural-habitat refuge for  
endangered Asian and African elephants.

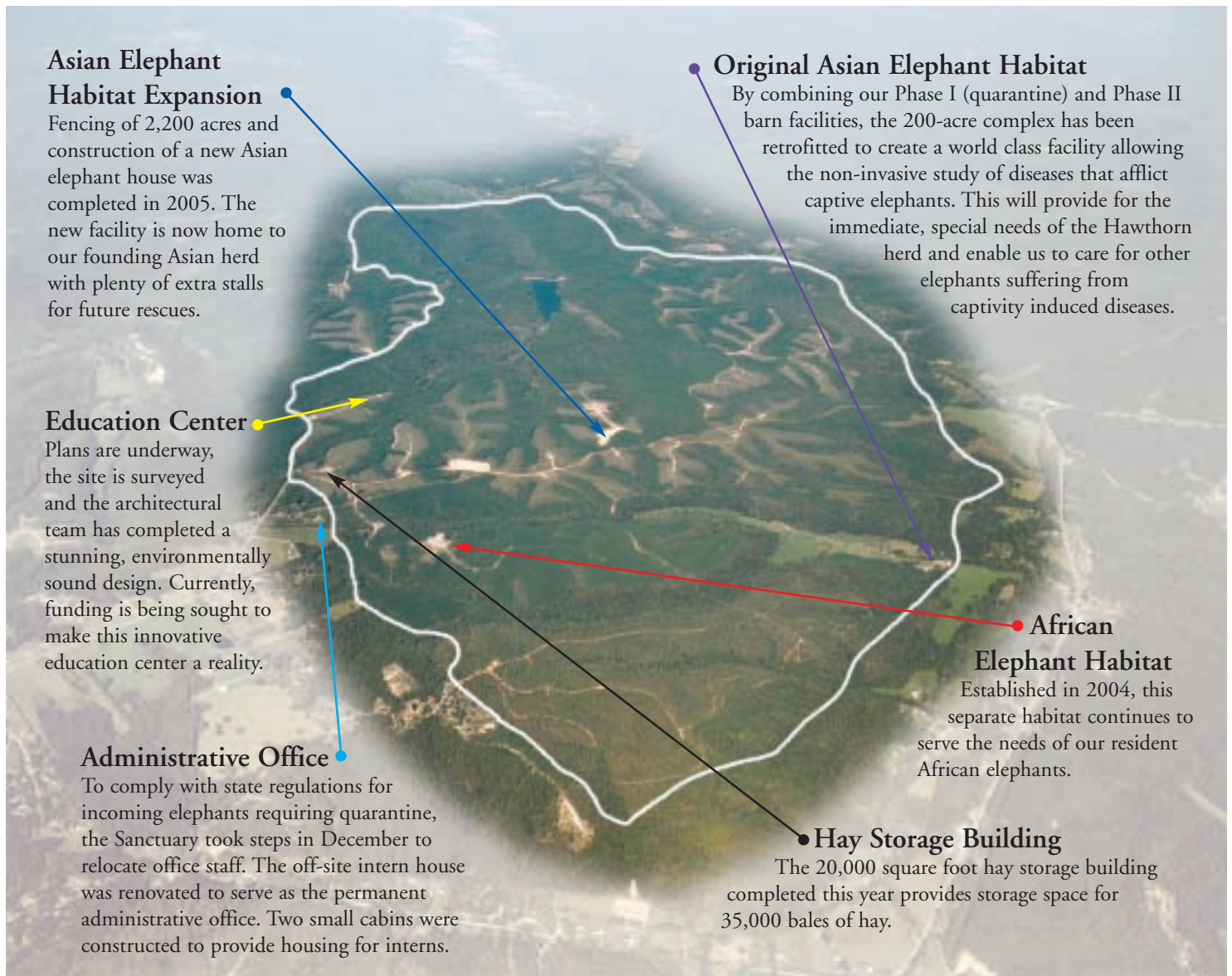
A 501(C)(3) nonprofit organization

[www.elephants.com](http://www.elephants.com)

# In 2005

## The Elephant Sanctuary in Tennessee

*completed construction of a new, state-of-the-art Asian elephant house as well as 20 miles of corral and perimeter fencing to allow the resident elephants access to the entire refuge; 2,700 acres of natural habitat.*



### Asian Elephant Habitat Expansion

Fencing of 2,200 acres and construction of a new Asian elephant house was completed in 2005. The new facility is now home to our founding Asian herd with plenty of extra stalls for future rescues.

### Education Center

Plans are underway, the site is surveyed and the architectural team has completed a stunning, environmentally sound design. Currently, funding is being sought to make this innovative education center a reality.

### Administrative Office

To comply with state regulations for incoming elephants requiring quarantine, the Sanctuary took steps in December to relocate office staff. The off-site intern house was renovated to serve as the permanent administrative office. Two small cabins were constructed to provide housing for interns.

### Original Asian Elephant Habitat

By combining our Phase I (quarantine) and Phase II barn facilities, the 200-acre complex has been retrofitted to create a world class facility allowing the non-invasive study of diseases that afflict captive elephants. This will provide for the immediate, special needs of the Hawthorn herd and enable us to care for other elephants suffering from captivity induced diseases.

### African Elephant Habitat

Established in 2004, this separate habitat continues to serve the needs of our resident African elephants.

### Hay Storage Building

The 20,000 square foot hay storage building completed this year provides storage space for 35,000 bales of hay.

*2,700-acre natural-habitat refuge for needy Asian and African elephants*

### *Message from the Directors*

2005 was filled with welcomed rewards and inescapable heartbreaks. Shortly after her rescue, Lota passed away, leaving us saddened that her life was cut short due to ignorance and greed. Misty mourned Lota's death but quickly rebounded, accepting her daily tuberculosis treatment with complete cooperation.

Throughout the year, the Hawthorn elephant rescue remained a top priority. Negotiations with the Hawthorn Corporation broke down so many times we feared the elephants might never be granted sanctuary and instead be forced back into the circus industry. Seemingly unaffected by the turmoil of the pending rescue, our eleven resident elephants continued to blossom, utilizing their habitat to an even greater extent than ever before. Their personal recoveries continue to astound researchers and caregivers alike. Increasingly, we have been called upon to provide expert testimony and humane education regarding the health and well-being of captive elephants remaining in zoos and circuses.

Our International Elephant Assistance Program expanded once again enabling us to provide much needed medical care to a greater number of wild and captive elephants abroad. Our efforts in 2005 brought us closer to our goal of providing a safe environment and health care services for captive elephants, insuring that they live out the remainder of their lives in peace and dignity.

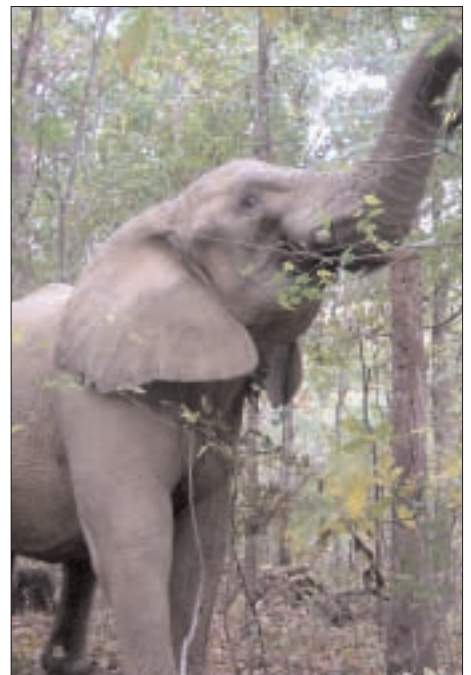
Sincerely,

*Carol Buckley Scott Blais*

Carol Buckley & Scott Blais  
Founding Directors

# The Elephant Sanctuary in Tennessee

*Located in the gently rolling hills of middle Tennessee, The Elephant Sanctuary is the only natural-habitat refuge of its kind designed specifically for Asian and African elephants. A landscape of seeded pastures, dense woodlands, a spring-fed lake, ponds and streams is now a haven for sick and needy elephants retired from zoos and circuses.*



## *Our mission is to:*

- Provide a spacious and rich environment in which captive elephants can freely exercise their true nature, a place where they are treated with respect and minimal intrusion.
- Support non-invasive research; practice progressive methods of management and care of resident elephants.
- Share knowledge about captive elephants through education and consultation.
- Collaborate with organizations working to improve the conditions of all elephants worldwide.

## *10th Anniversary, New Beginnings*

2005 was the year of preparations. The groundwork was laid as we prepared for the arrival of an entire herd of circus elephants. Our elephant population and the number of caregivers would double. We initiated plans internationally to expand our program's capacity for the care of captive elephants. Recognizing that education is the key to change, we devoted a great deal of time and energy towards increasing public awareness regarding the crisis faced by captive elephants worldwide. We extended offers to provide sanctuary to zoo elephants whose health and welfare had caused public concern in Chicago, Detroit, Birmingham, Philadelphia, Tucson, Anchorage, El Paso, Washington DC, Los Angeles and Tel Aviv, Israel.

Internal efforts were focused on completing the habitat expansion and renovations required by Tennessee authorities in order to receive a herd of circus elephants that were the subject of a federal court case. We had already received three members of this herd—Delhi, Lota and Misty—but since all of these elephants had once been exposed to tuberculosis, taking in the rest of their “sisters” would require quarantine facilities on a much larger scale. Being able to provide for their special needs made The Elephant Sanctuary the front-runner in a short list of facilities qualified to accept these elephants. Convincing their owners to agree to donate this herd to us was by far our greatest obstacle. An agreement was finally reached on November 29, 2005.

Early in the year, only weeks after her arrival, it became painfully apparent to us that Lota's tuberculosis was advanced and she could not survive the disease. On February 9, 2005, in the quiet company of Misty, Lota passed away. In time, Misty's cheerful mood returned and she accepted the attention of her human caregivers and TB treatments with complete cooperation. Misty is required to receive 12 months of treatment before she can be released from quarantine and reunited with her “sisters.”



*The Hawthorn Corporation elephants, the focus of a Federal lawsuit, await their move to a new home.*



*Lota – 1951-Feb 9, 2005*

*Lota's legacy will be the awareness she created regarding the suffering of captive elephants.*

## Program Areas

### The Sanctuary

The Elephant Sanctuary encompasses 2,700 acres, making it the nation's largest natural habitat refuge developed to meet the special needs of elephants. By the end of 2005, eight female Asian elephants and three female African elephants called the Sanctuary home. Twenty miles of perimeter and elephant corral fencing were completed, protecting and enclosing all 2,700 acres. Construction of a large elephant house was also completed in 2005, enabling the Sanctuary to establish a second, separate Asian elephant habitat even larger than the original. A larger hay storage barn and two intern cabins were also built on the property.

**Education** about elephants and the crisis they face is a critical component of The Elephant Sanctuary's mission. We reach millions of people annually through the internet, videoteleconferencing, live streaming video, the media, and documentaries about our work. Sanctuary staff also conduct outreach education in the U.S. and overseas.

### [www.elephants.com](http://www.elephants.com)

Our award-winning web site provides a wealth of information about our work and the status of elephants around the world. Our site offers program descriptions and updates, downloadable educational materials as well as links to current elephant welfare information. [www.tappedintoelephants.com](http://www.tappedintoelephants.com) uses live streaming video to provide an around-the-clock window into Sanctuary life enabling visitors to observe without disturbing the elephants. It attracts over 21 million hits a year.

### *Three Separate Sanctuaries*

The 2,700 acre refuge has now been divided into three separate habitats. One habitat is for the African elephants, a new, larger habitat for the Asians which includes a large spring-fed lake, and a third habitat, complete with two elephant houses, has been re-dedicated as a special needs/quarantine facility. This new quarantine facility not only enables us to rescue elephants with special needs, it will also serve as a world-class, non-invasive research center to help diagnose and treat diseases all too common in captive elephants, such as tuberculosis and osteomyelitis.



*A group of volunteers lending their support to the Sanctuary.*

## Volunteer Day Program & Internships

In 2005 hundreds of volunteers participated in our Volunteer Day Program, including attendees of the first annual Elephant Advocacy Rally (EARs). The Volunteer Day Program allows individuals and groups to be directly involved in the Sanctuary's growth while immersing themselves in an inspiring wilderness setting. The Sanctuary's ongoing Internship Program proved equally successful. Designed to instill respect for elephants and for all life, the Internship Program also provides the Sanctuary with much needed assistance. Interns and volunteers work under the guidelines of the Sanctuary's non-invasive management philosophy, which restricts them from direct physical contact or verbal interactions with the elephants. At the Sanctuary, observation is the key to learning. Silence is encouraged while in the presence of elephants, challenging all to quiet their voice and learn through their eyes, ears, hearts, souls and minds.

# New Asian Barn & Habitat

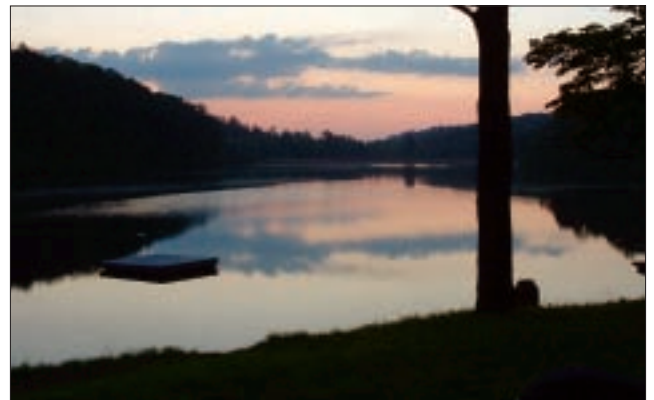
Responding to the immediate need to make room for a large group of circus elephants, the Sanctuary raised money and began construction of a new Asian barn. Because we learned this incoming herd would require a special two-barn quarantine facility, the decision was made to relocate our “founding” Asian herd to the new facility and repurpose the existing Phase I & II Asian barns to meet the USDA’s housing requirements. Utilizing the existing two-barn facility for the incoming herd was not only a more economical solution, the newly-constructed elephant house would give us abundant housing and habitat space to rescue additional Asian elephants who would not require special medical attention.



*The new nine-stall Asian barn is ready to welcome Tarra, Shirley, Jenny, Bunny, Sissy, Winkie and Delbi—with plenty of room to spare.*

The new Asian house contains nine stalls, and employs the same award-winning design used for the recently constructed African barn. These structures are designed to be both environmentally and elephant friendly. Harnessed solar power and recycled rain water help to conserve resources and ensure a minimal impact on the environment.

Perimeter fencing was also completed to enclose the remaining 2,200-acre land expansion. In addition to dense forests and lush pasture lands, this area also contains a 25-acre lake that is sure to become a favorite destination for the elephants year round. An additional hot wire fencing system was also erected between the two Asian habitats. This extended buffer zone was required by the Tennessee Wildlife Resources Agency to provide an added quarantine precaution.



*The peaceful, 25-acre spring-fed lake is now available to the Asian herd in the newly-expanded habitat.*

The Elephant Sanctuary is currently seeking a corporate sponsor to underwrite the acquisition of several satellite towers and 20 new surveillance cameras. The installation of this equipment in the new Asian habitat will allow us to monitor elephant behavior and educate viewers in the same non-invasive manner presently provided in other areas of the Sanctuary.



*The Elephant Sanctuary supports several efforts benefiting captive and wild elephants in Asia.*

*An emaciated elephant gets a bath in a remote village in Northern India.*

## International Elephant Assistance

The Asian Elephant Habitat Program addresses the leading cause of the decline in wild elephant populations—loss of habitat. The goal is to slow habitat degradation and reclaim once viable elephant habitat so that elephants can lead normal lives. Strategies include teaching alternative job skills and relocating non-indigenous people who have taken up residence in elephant home ranges.

The Human-Elephant Conflict Project executed by the Nature Conservation Foundation and supported by the Sanctuary has uncovered much information about elephant movements, corridors, and conflict with people in the Anamalai Hills in the Western Ghats of India. The Anamalai contains the second largest population of endangered Asian elephants in India. This information is critical to the conservation effort.

The Captive Elephant Health Care Program is a grass roots endeavor aimed at improving the health and welfare of captive elephants in Asia. In 2005, we proposed a five year grant to help expand the elephant care camps to include a vehicle to allow the veterinarians to reach more remote locations, as well as additional funding to expand the numbers of elephants that will receive care.



*The Captive Elephant Health Care Program*

The Elephant Nature Park is Thailand's only refuge for abused and abandoned Asian elephants. It is the Sanctuary's newest assistance project.

# Accomplishments in 2005

## Land and Facilities

---

- Renovated the intern house to function as the Sanctuary administrative office
- Constructed two cabins for interns
- Retrofitted the Phase I and Phase II barns and habitat to serve as quarantine facilities
- Completed 20 miles of fencing encompassing the entire 2,700 acre refuge
- Completed site plan and preliminary design for an Education Center
- Founded the *Elephant Health and Welfare Institute* to develop diagnostics and treatments for diseases that plague captive elephants
- Negotiated the release of nine circus elephants
- Continued to research alternative treatments for elephants suffering from osteomyelitis and arthritis
- Expanded mobile health care clinic for captive elephants in northern India
- Underwrote supplemental feeding of captive elephants in Thailand
- Presented expert witness to numerous governmental agencies regarding a captive elephant's need for space
- Worked with Tennessee Wildlife Resources Agency to develop more stringent requirements for elephants entering the state
- Completed a 22,000 sq. ft. state-of-the-art elephant house for Asian elephants
- Expanded the elephant habitat acreage

## Research

---

- Underwrote supplies, equipment and salaries for anti-poaching patrols in India
- Collected data for behavioral analysis comparisons of wild and captive elephants
- Consulted for research on post traumatic stress disorder in wild-caught elephants living in captivity
- Collected data from tuberculosis treatment of one elephant
- Collaborated in research for a blood test to determine the TB status of elephants
- Contributed information to aid in the creation of an injectable birth control device for wild elephants
- Collected data used to study emotional health in elephants

## Financial

---

- Launched an ongoing membership drive, increasing our membership to 62,000
- Secured a matching grant for the \$1.5 million dollars raised by our capital campaign to construct the new Asian elephant house

## Staff

---

- Added three additional keepers to our elephant care staff and 6 part-time office personnel
- Worked with a team of veterinarians to oversee the treatment of elephants infected with tuberculosis
- Expanded our internship program to include professionals from the veterinary and health care fields
- Hired a part time graphics designer
- Secured a NYC-based agency to handle PR for the Hawthorn elephant rescue

## Awareness/Advocacy

---

- Issued three Sanctuary newsletters
- Raised awareness about the plight of captive elephants through the Animal Charities section of the Combined Federal Campaign
- Worked with disease experts and state officials to identify the degree of risk posed by elephants with the human strain of tuberculosis
- Provided an online resource for elephant care and welfare issues
- Published third annual report
- Featured in *The Courier Press*, *The Paris News*, *Northwest Herald*, *KFOX News*, *Haaretz.com*, *CBS3 – Philadelphia PA*, *The Associated Press*, *Independent Charities of America*, *DailyNews.com*, *Philadelphia Enquirer*, *Merlian News*, *WBIR.com*, *NCTimes.com*, *WBBM Newsradio 780 – Chicago*, *Reuters MSNBC*, *WetNoodlePosse.com*, *Seattle Post*, *News-Record.com*, *Yahoo.com*, *CharityNavigator.org*, *WEVL FM 90 – Memphis, TN*, *Lighting 100 – Nashville, TN*, *100.1 WRLT – Nashville, TN*, *Washingtonpost.com*, *The Washington Post*, *Lewis County Herald*, *The Animal World*, *Ladies Home Journal*, *National Geographic*, *Fern's Harmony Home*, *Hickman County Times*, *Chicago*, *Species Link*, *The Tennessean*, *USA Today*, *Cruel Oil*, *Oxford American*, *The Birmingham News*, *Santa Barbara News*, *Nashville Today*, *The News*, *El Paso Times*, *The Commercial Appeal*, *The Chicago Tribune* and *Cherie Valentine's Backyard*.

## A Bright Future

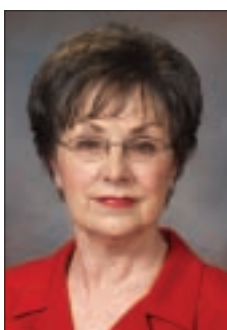
As we enter our eleventh year, it has become obvious that what started as a modest attempt to help a few needy elephants has grown exponentially to encompass the welfare of captive elephants worldwide. Our organization's ability to impact the lives of captive elephants here and abroad brings us hope that one day captive elephants will live a healthier existence in more natural surroundings. If we cannot afford this ancient species true freedom by protecting their homelands, then providing them with a reasonable facsimile is mandatory. We are grateful for the vital support from so many who have helped us come so far.

# Corporate Officers & Directors

**Carol Buckley** is co-founder and Executive Director of The Elephant Sanctuary. She helps to care for the eleven resident elephants, consults on elephant care and management, runs the Sanctuary's business office, organizes elephant acquisitions, and develops and implements educational programs for the public. She is a well-known speaker on elephant care.



**Scott Blais** is co-founder, Vice President, Operations Director and the primary caretaker for the resident elephants at The Elephant Sanctuary. He directs the operation of the natural habitat refuge. Scott has been instrumental in the design and construction of the Sanctuary's facilities. He also aids in implementing public education.



**Sandra Estes** serves as president of the Board of Directors. She is a Financial Service Representative for Regions Bank. She lives in Hohenwald, Tennessee.

**William Schaffner** serves on the Board of Directors. Dr. Schaffner is an infectious disease professor at the Vanderbilt University School of Medicine and a notable institution consultant on public health policy and communicable disease control. He lives in Nashville, Tennessee.

**Leslie Pon Tell Schreiber** serves on the Board of Directors. Before retiring Leslie served as Co-Director of Ontario's Bowmanville Zoo and was the Instructor's Assistant Director of Moorpark College's Exotic Animal Training & Management Program. She lives in Tiburon, California.

**Hank Sherwood** serves as Secretary/ Treasurer. He is founder and retired CEO of the advertising agency, Gish, Sherwood & Friends, Inc. He lives in Nashville, Tennessee.

**Janice Zeitlin** serves on the Board of Directors and as president of the Executive Council. A decade-long volunteer for the Sanctuary among numerous other community and professional organizations, she owns Zeitgeist Gallery and lives in Nashville, Tennessee.

## Executive Council

Brenda Batey  
Nashville, Tennessee

Katy Chudacoff  
Franklin, Tennessee

Betsy Dodd  
Nashville, Tennessee

Kate Elliott  
South Salem, New York

Debbie Emory  
Hermitage, Tennessee

Amy Estes  
Newburgh, Indiana

Douglas Henry  
Nashville, Tennessee

Judy Jones  
Nashville, Tennessee

Jutta Maue-Kay  
Franklin, Tennessee

Lois Knight  
Nashville, Tennessee

Judith Newby  
Nashville, Tennessee

Mary Anne Nyquist  
Nashville, Tennessee

**Herbert Fox, Jr.**  
1925-2005

*The Sanctuary was honored in 2003 when Herbert Fox, founder of nFocus, agreed to lend his support and talents to The Elephant Sanctuary's Executive Council. He will be dearly missed.*

Roseanne Sietins  
Dickson, Tennessee

Cynthia Smythe  
Nashville, Tennessee

Carolyn Stalcup  
Brentwood, Tennessee

Susan Stewart  
Nashville, Tennessee

Janet Turner  
Hohenwald, Tennessee

Patsy Weigel  
Nashville, Tennessee

Janice Zeitlin  
Nashville, Tennessee

## Summary of Financial Activities 2004

Public Support & Revenues	
Public Support	5,156,268
Other Revenues	226,015
<b><i>Total Public Support and Revenue</i></b>	
5,382,283	
Expenses & Losses	
Program Services	1,507,835
Supporting Services	
Management and General	113,237
Fundraising	87,060
<i>Total Supporting Services</i>	200,297
<b><i>Total Expenses</i></b>	
1,708,132	
Increase in Net Assets <small>(\$3 Million of revenue was a result of the Capital Campaign to build the new Asian barn in 2005)</small>	3,674,151
Net Assets – beginning of year	2,988,154
Net Assets – end of year	<b><u>\$6,662,305</u></b>
<i>(Audited)</i>	

*Operation of The Elephant Sanctuary would not be possible without the help of our 62,000 members, volunteers and donors who support us at every level.*

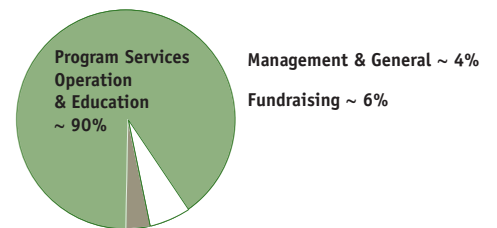
## Support

### Major Donors

Heather Adkins  
 Animal Welfare Trust  
 Laurie Bates  
 Ms. Leslie Christodouloupoulos  
 Mary & Ted Moore  
 Chrysalis Foundation  
 Janet J. Clarke  
 Dr. Charles F. Colao  
 William Cowan, Jr.  
 Ann Tutwiler Dwyer  
 Gary Fink  
 Peter Storer  
 George B. Storer Foundation, Inc.  
 Katharyn Alvord Gerlich  
 Susan Gimbel  
 Serena Connelly  
 Harold Simmons Foundation

Pamela W. Logan  
 Nancy Oddo  
 The Max & Victoria Dreyfus Foundation  
 Michael McMahan  
 Madeleine Higley Living Trust  
 De Nyse W. T. Pinkerton  
 Celine Myers  
 Roberts Foundation/  
 Ark Watch Foundation  
 Meredith Schuman  
 Speciality Coating Solutions, LLC  
 Jody Stickney  
 Mrs. Carole Strauss  
 T & T Family Foundation  
 Bert & Christi von Roemer  
 The Serengeti Trading Company, LLC  
 Lucille Walter

### Expenses ~ based on 2005 unaudited financial records



*Delbi has taught us that when an elephant is given freedom and space, their ability to recover from captivity-induced diseases such as osteomyelitis is greatly increased.*

*Benefactors (\$5,000 – 9,999)*

Dr. Julia N. Allen  
C/O SunTrust Bank - Christine Butler  
Appleby Foundation  
Shirley J. Ashley  
Pamela Koppie Austrich  
Breanna Bell  
John & Marilyn Blake  
Susan Carrick  
Lisa K. Collins  
Mr. George Conner  
Adam DeSanctis  
DeSanctis Insurance Agency Inc.  
Florence & Steve Goldby  
Chrystal Hall  
W.J. and Patricia Hayes, Jr.  
Vicki M. Johnson  
Allison Kelly  
Lynne Cooper Harvey  
Lynne Cooper Harvey Foundation  
Robert B. Medina  
Nancy Noblin  
Nancy Forsyth Noblin Found., Inc.  
Anne Partee  
Barbara S. Peters  
Jill Wagers & Joe Salimando  
Carolyn Stalcup  
Margaretta Taylor  
Clare Eddy Thaw  
Elinor Zetina

*Patrons (\$1,000 – 4,999)*

AAZK Detroit Chapter  
Cynthia J. Alkhouairy  
Betty Lou and Dick Almeida  
Wayne and Donna Ambrous  
Chris & Bob Anderlik  
Ann August  
Sally and Ronald Ball  
Robert & Charlotte Barchenger  
Billie Allen and Phyllis Barlow  
Lydia Morales and Carol Bartunek  
Benjamin J. Rosenthal Foundation  
Harold & Paula Bennett  
Jordan & Sarah Berlin  
Debbie & Nick Berman  
Gayle Bertsch  
Barbara Bettke  
Edith Betts  
Claire & Norm Blais  
Ellie Block  
Ms. Barbara Borchart  
Born Free Foundation  
Cheryl & Gary Bosak  
Kathi-Jane Bowen  
Robert Tannert & Delpha K Bradley  
Warren W. & Esther C. Brandt  
Mrs. Lois D. Brounell  
Lewis Brounell Charitable Trust  
H. Anne Browne  
Mary Buckley  
Dr. & Mrs. Robert Bunnen  
Robert N. Burhans  
Kevin Reilly & Sheila Burns  
Doris Cain  
Margaret Calkins Charitable Foundation  
Mary-Jean Cameron  
Jim & Jill Carlberg  
William & Ruth Carlin  
Gloria Carr  
Clint and Patricia Carter  
J. Rachel & Pat Cassidy  
John Halloran  
Certified Gold Exchange, Inc.  
Dave & Cyndie Chen  
Rhoda A. Christopher  
Christopher Smale Foundation  
Katy & Rick Chudacoff  
Dovetail Design Works  
Clara Cist  
Barbara Clarke  
Jack & Tia Clarke  
Thomas & Judith Clay  
Pam Clifford  
Karin A. Coakley  
Courtney Conklin

Charles & Rebecca Cooper  
Mary Copelin  
Cranleigh Foundation C/O Jeanne A. Trainer  
Linda Ray Cross  
Lynne N. Crowton  
Jeannine Cuevas  
Jean Cullen  
Joan M. Davenport  
Ann L. Davidson  
Julia Dean  
Bert DeVries  
Joanne Dietz  
Michele Dion  
Holly & Joel Dobberpuhl  
Madeline & Charles Dodd  
Diane R. Dohm  
Mrs. Mary Ann Donoghue  
Laura Renee Dougherty  
Thomas D. & Renee B. Duane  
Robert Duffy  
Evelyn S. Dufour  
June E. Dufour  
Mr. and Mrs. Grey Dunlap  
Ms. Constance K. Duprey  
Marcia Duvall  
Victoria Dwight  
Ginger Eades  
EleFan Herd  
Catherine Elliott  
Paul & Patricia Ellsworth  
Jackson Emerson  
Debbie Emory  
Laurie and Steven Eskind  
Amy E. Estes  
Sandra Estes  
Ms. Nancy C. Farnam  
Ms. Pamela A. Farrance  
Mr. & Mrs. Robert Fay  
Mrs. Ali Ferrell  
Waltraud D. Finch  
Trudy Flippo  
Virginia Floyd  
Mark and Karen Fortenbery  
Denice Fortin  
Dawn Fournier  
Chip & Annette Fox  
Marie Fraser  
Fred B. Bearden, III & Associates  
Elizabeth Friess  
Fruitport Community School  
Jacquelin N. Fusco  
Jeffrey and Jan Gale  
Katie Gillis  
Lisa & Samantha Glass  
Jennifer Golik  
Nancy Gordon  
Mr. & Mrs. Al Gore  
Beth Graham  
Elizabeth Graham  
Gloria Gray  
Marjorie Neale Griffith  
Susan Griffith  
Thelma Overholtzer & P. Groh  
William Guenther  
Margaretann Haag  
Elizabeth Haartz  
The Hartland Foundation  
Caroline H. Hall  
Thomas & Julie Hanes  
Aviva Harris - C/O Paramount  
Edward Harris  
Norman & Esther Harris  
Shirleyann Haveson  
David & Melinda Hay  
W. J. & Patricia Hayes Jr.  
Valerie, Stephen & Cyrus Hays  
Gail Hazen  
Kathryn Head  
David & Terri Hedges  
Ashley and Douglas Henry  
Anne Hess  
Nicke & Richard Hetzel  
Hillsboro Presbyterian Church  
Rebecca & Ronald Hischier  
Linda Hodges  
Connie Hoffman

Mr. Hubert N. Hoffman III  
Hoffman Management Operating  
J. Keith Holaway  
Alan Hollbrook  
Lela Hollabaugh  
Michelle D. Holmes  
Lauren A. Horwitz  
Richard S. Hotchkiss  
Vernon D. Howard  
Linda Jasper  
Anna S. Jeffrey  
Mr. and Mrs. William Joel - C/O Gelfand,  
Rennert & Feldman, LLP  
Helen Joffrion - John Albee Realty Inc.  
Michael Jones  
Mr. & Mrs. Gregory D. Juwa  
Akira Kageyama  
Agnes E. Kantanen  
Alice Lipska, Lynn Heller  
Donna & Chris Karabin  
Ann Kiesel  
Jeremy Killian  
Joyce Woltz Kirkwood  
Dorothy Kirsch  
Rosa M. Rivera Kivilcim  
Larry and Carol Klevans  
Dr. W. Schaffner & Lois Knight  
Gayle E Koan  
Kirsten Kos  
Thomas G. Kubit  
Mary Kuehl  
Rose M. Kuhn  
Dr. Shannon S. Lamb  
Z. Benitez & Elizabeth Lambros  
Ms. Marcia P. Lane  
Sharon Langford  
Sally Lappen & Nik Warren  
Lappen Family Foundation  
Jennifer Larkin  
Ted and Gloria LaRoche  
Belina Lazzar  
Richard and Dorotha Ledman  
Bettie B. Lee  
Jeanne LeHardy  
Nevalyn Otten and Evalyn Leibow  
Mary Jane Leland  
Daniel & Elaine Leonard  
Sandy Lerner - Ayrshire Farm  
John Hockenberry & Nina Levitt  
Pam Lewis  
Michele Lloyd  
Dr. Lynn Lofthouse  
James Babcock & Teri Ludwick  
Gertrude MacGregor  
Neil MacMillan  
Merrick Morgan & Tony Madsen  
Burke R. & Glenna G. Magee  
Emily Magid  
Kumiko Shimizu & David Magnan  
Drs. Paula and Walt Mahoney  
Maureen Adams - Manna Supply, Inc.  
JoAnn Marchi  
Kim Markovchick  
Mr. John L. Markson  
Victoria Marone  
Martha Martin  
Ann S & John C Mathews  
Bobbie Mathieu  
John & Jutta Maue-Kay  
The Maue Kay Foundation  
Cory Mauldin  
Willie Hurd  
Maury Fence Co. of Tennessee  
Julie J. McCown  
Tim & Kate McCullough  
Lisa A. McDowell  
Carolyn McIntyre  
Stephen & Sally McVeigh  
Albert & Janell Meers  
Ellen M. Meyer - Meyer and Glitzenstein  
Bill Michaels  
Michael & Yvette Miller  
Vicki Mills  
Dennis & Sharon Monroe  
Margaret A. Montana, M.D.  
Joseph Moran

Burton H. & Betty J. Moree  
Carol & Rod Mores  
David Stone & Catherine Morton  
Marcia J Mosimann  
Marlene H. Mumford  
Ruth Munoz  
Jean Murphy  
Kevin E. Murphy  
Pamela Myers  
Stephanie & Mohan Nair  
James Gabriel & Nancy Nelson  
F.W. & Frances Newell  
Terry Newell  
Carmal Nicks  
Paige Rense Noland  
Mary Anne & Steven Nyquist  
Janet Olson  
Peggy Ornelas  
Jami Sieber - Out Front Music  
Ms. Shirley H. Parsons  
Joseph P. Patner  
Kathleen Paulson  
Colleen Perrin  
David Pettit  
Deadra Jewell - Piedmont Plastics, INC  
Cynthia Pierson  
Ellen J. Plumtree  
Cathy Porter  
Elizabeth W. Pratt  
Prince Charitable Trusts  
Donna L. Miller - Products of Tomorrow, Inc.  
Quality Industries  
Victoria Heil & Eric Raefsky Advised Fund  
The Comm. Found. of Mid TN  
Patti & Harry Ragsdale  
Michelle & Shelley Reagin  
Christine Rehnke  
Frances B. Rentschler  
Mrs. Barbara Tomkins Ridgely  
Karen Ringsred  
Crystal Rivers  
Wendy Roberts  
Ms. Barbara Rogoff  
Alan Ross  
Richard Rubin  
Vera & William Rusak  
Joe Salimando  
Gopinath Sankarasubramani  
Charles W. & Lela H. Sayward  
Arielle Schechter - Schechter Foundation  
Dr. Donald Schnell  
Luke & Kim Seabrook  
Catherine & George Sebastian  
Miriam Seiden  
Cynthia Kravitz & Jerry Sell  
Alex Semilof  
Laura & Joel Shellhase  
Katherine J. Shelton  
Gish, Sherwood & Friends - Hank Sherwood  
Hank & Weezie Sherwood  
Gina Clark - Shertler Elementary School  
Charlene Shumate  
Victoria & Irving Siegel  
Rosanne L. Sietins  
Linda H. Simpson  
Judith & Gary Smith  
Kevin & Ramona Smith  
Marcella Smith  
Catherine M. Smolich  
Mrs. J A Snell  
Joe Sniezek  
Janis Ian & Pat Snyder  
C. Richard Stafford  
Michael K. Stagg  
Waller Landens Dortch & Davis  
Kay L. Stephens  
Ann Arbor Area Community Foundation  
Helmuth & Candis Stern Animal & Bird  
Welfare Fund  
Frances Stevenson  
Virginia & Michael Stewart  
Edith Sticker  
Rhonda Stoup  
Barbara Smith & Daniel Sullivan  
J. Dang - The Strategic Coach  
Suncrest Industries Inc.

*Patrons (\$1,000 – 4,999) continued*

Margaret Ellen Swain  
Kathryn Szydowski  
Talbot Family Foundation  
Robert & Kathryn Taylor  
Kalyani & Muthiya Thangaraj  
Mitzy & Rick - The Cloth Bag Company  
Karen Gupta, Director  
The Gaea Foundation  
Victoria Aronoff - The Gifford Foundation  
The Kaufman Family Foundation  
The Morris Family Foundation  
The Paulus Foundation  
David Fitts - The Pegasus Foundation  
The Phase Foundation  
The Pimco Foundation  
Neil Steven Rollnick  
The Selma Oritt Foundation  
Susan Freeman McGee - The Sulica Fund  
The Trico Foundation  
Miss Marvel Thiel  
John B. Thomison, Sr.  
Mary Clare Hubert - Tides Foundation  
Martha L. Till  
Tim Mather and David Trautvetter  
Margaret L. Trembath  
Janet and Landis Turner  
United Animal Nations  
V & W Ready-Mix  
Mary B. Valentine  
Jean and Rich VanCamp  
Ms. Katherine M. Vande Logt  
R. Lee Armbruster  
Vista Makai Foundation, Inc.  
Bruce Mitteldorf - Vital Spark Foundation  
Nan F. Waddington  
Kevin Curdt & Dr. Cory Wade  
Mary Wade  
Horatio B. & Willie J. Buntin Found  
Elizabeth DeCoux & Diana Waldron  
Starling Walter  
Russell Irwin & Margaret Watts  
Bob and Patsy Weigel  
Ann Weintraub  
Lois A. Wenzholz  
Joan Werner  
Mr. & Mrs. Phil B. Whitaker  
Jean White  
Thomas Research, Inc.  
Frank and Marilyn Williamson  
John Cochran & Jo Williamson  
Dennis Wise  
Steven & Frances Wolf  
Michael Kieschnick  
Working Assets Funding Service

Eleanora M. Worth  
Carol Yabu  
G. Ramsey Yoder  
The Zeitlin Family

*VIP Patrons*

Cynthia J. Alkhoudairy  
Betty Lou and Dick Almeida  
Wayne and Donna Ambrous  
American Heart Savers  
Ann August  
Sally and Ronald Ball  
Lydia Morales and Carol Bartunek  
Kim & Jim Becker  
Jordan & Sarah Berlin  
Debbie & Nick Berman  
Barbara Bettke  
Claire & Norm Blais  
Steven & Vicki Bohleber  
Cheryl & Gary Bosak  
Robert Tannert & Delpha K Bradley  
Kevin Reilly & Sheila Burns  
Victoria Bush  
Doris Cain  
Gloria Carr  
Clint and Patricia Carter  
Dave & Cyndie Chen  
Barbara Clarke  
William and Julie Clarke  
Brian & Laurie Conroy  
William Cowan  
Jean Cullen  
Michele Dion  
Holly & Joel Dobberpuhl  
Thomas D. & Renee B. Duane  
Christine Dustin  
Ann Tutwiler Dwyer  
Catherine Elliott  
Debbie Emory  
Laurie & Steven Eskind  
Mrs. Ali Ferrell  
Chip & Annette Fox  
Katie Gillis  
Holly Gordon  
Martha Graef  
Beth Graham  
Thelma Overholzer & P. Groh  
Susan & Jim Hammersley  
Thomas & Julie Hanes  
Shirleyann Haveson  
Valerie, Stephen & Cyrus Hays  
Kathryn Head  
Mr. Hubert N. Hoffman III  
Grace Holden  
Lela Hollabaugh

Michelle D. Holmes  
Richard S. Hotchkiss  
Debra Hull  
Summer & Mark Humphries  
Courtney Hunt  
Mr. & Mrs. W. S. Hyland  
Francis Roberto Ibarra  
Linda Jasper  
Helen Joffrion  
Vicki M. Johnson  
Agnes Kantanen  
Allison Kelly  
Ann Kiesel  
Dorothy Kirsch  
Larry and Carol Klevans  
Dr. W. Schaffner & Lois Knight  
Nicki Kravcisin  
Sharon Langford  
Jennifer Larkin  
Ted and Gloria LaRoche  
Bettie B. Lee  
Pamela Lewis  
Merrick Morgan & Tony Madsen  
Emily Magid  
Drs. Paula and Walt Mahoney  
Mr. John L. Markson  
Victoria Marone  
Donna J. Marshall & W. Higgins  
The Maue-Kay Foundation  
Cory Mauldin  
Tim & Kate McCullough  
Carolyn McIntyre  
Stephen & Sally McVeigh  
Margaret A. Montana, M.D  
Brittany Mora  
Pamela Myers  
Stanley Masumoto & Doris Nakamura  
Leta Newgarden  
Douchka Noren  
Lisa Northrup  
Marne K. Olson  
Peggy Ornelas  
William Porter  
Maureen & Jerry Powers  
Sandra Prangle  
Patti & Harry Ragsdale  
Ellen Fuller & Bradly Reed  
Christine Rehnke  
Mrs. Barbara Tomkins Ridgely  
Heber and Fran Rogers  
Richard Rubin  
Doreen Rudnick  
Luke & Kim Seabrook  
Catherine & George Sebastian  
Cynthia Kravitz & Jerry Sell

Michele Ferketich Serratore  
Alissa and Bear Shanley  
Laura & Joel Shellhase  
Hank & Weezie Sherwood  
Jeff & Darcy Silver  
Linda H. Simpson  
Judith & Gary Smith  
Kevin & Ramona Smith  
Marcella Smith  
Janis Ian & Pat Snyder  
Frances Stevenson  
Virginia & Michael Stewart  
Kathryn Szydowski  
Robert & Kathryn Taylor  
John B. Thomison  
Angela and Lou Trauth  
Tim Mather and David Trautvetter  
Jean and Rich VanCamp  
Horatio B. & Willie J. Buntin Foundation  
Russell Irwin & Margaret Watts  
Ted & Sheila Weschler  
Samara & Elvin Whitesides  
John Cochran & Jo Williamson  
Sean and Tammy Wolfort  
Gretchen Wyler  
Youth Development Foundation

*Corporate Sponsors*

Moses.com  
Bellsouth  
TVA  
Business Wire  
MyEmma E-Mail Marketing  
Tappedinto.com  
Kricos.com  
Piedmont Plastics

For all donors, please forgive us if we have inadvertently omitted your name in recognition for your contributions. Please know that your support is greatly appreciated.



*The growing herd at The Elephant Sanctuary.*



P. O. Box 393  
Hohenwald, Tennessee 38462  
931-796-6500  
931-796-4810 (fax)  
info@elephants.com  
www.elephants.com

*In Kind Donors*

Dianna Aaron  
Tamara Abashian  
Roslyn Abramovitch Smith  
Karen Adams  
Kerry Adams  
Maureen Adams  
Cristina Colissimo - Ahali Elephants  
Claudia Akin  
Cynthia J. Alkhoudayry  
Dr. Julia N. Allen  
Sharon Callahan - Anaflo  
Ankra International  
Elizabeth W. Annan  
Shirley J. Ashley  
Theresa Aulig  
David Ferris  
Asian Elephant Art & Conservation Project  
Suzanne Attebury  
Ann August  
Pamela Koppie Austrich  
K.C. Bailey  
Larry Barca  
Alyssa Barney  
Lisa Beal  
Roy Beeler  
Patricia Fahey - Belle Forest Animal Hospital  
Larry A. Bernstein  
Barbara Bettke  
Scott Blais  
John & Marilyn Blake  
Laura Bleiler  
Attila Bognar  
Heather Bohannon  
J. L. Bonnet  
Ms. Barbara Borchardt  
Karen Borreson  
Joyce Boswell  
Edna Bowman  
Wendy Bowman  
Michele F. Boyle  
Connie Bradley  
Robert Tannert & Delpha K. Bradley  
Linda Brainard  
Robin Brandenburg  
Lynn Brandt  
Steven Braverman  
Brock USA  
Julia Brockman  
David Brule  
Carol Buckley  
Stephanie Buckley  
Joanna Burke  
Ana Callison  
Emma & Zoey Capatule  
William & Ruth Carlin  
Susan Carrick  
Fenna Corry  
Cell Tech  
Sarra & Jill Cheatham  
Vicki Chew  
Ms. Leslie Christodouloupolos  
Barbara Clarke  
Janet J. Clarke  
Kelly Colbert  
Carol Coleman  
Barbara Constans  
Cynthia & John Corbit  
Martha Coscarart  
Laura Cotter - E Washington Ave  
Joan E. Cottrell  
William Cowan  
Sandra L. Crary  
Sarah C. Crittendon  
Sherry Crowder  
Lynne N. Crowton  
Mrs. Bernice Csaszar  
Bridgestone/Firestone, Inc. Trust  
Jeannine Cuevas  
Kathleen Cullen  
Gary and Donna Jones  
Custom Interiors and Supply Co. Inc  
Debbie Davini  
Suzanne Davis  
Debra J. Deane

A. N. Deringer  
Tracy DiPiazza  
Tamara Dipirro  
Dawn M. Dockstader  
Betsy Dodd - BDodd Productions  
Tina Dommer  
Heather Donahue  
Ducksan Co., Ltd.  
Myrtle M. Dudley  
Florence C. Dunavant  
Ann Tutwiler Dwyer  
Diane Dye  
John & Victoria Herrmann  
Dynamic Scales, Inc  
Sandra Estes  
Gretchen C. Eby C/O Marcella Smith  
EleFan Herd  
Catherine Elliott  
Thomas Elliott  
Envirosystems, Inc.  
Mark & Christine Farmer  
Ms. Nancy C. Farnam  
Stacy and Neil Farnese  
Teresa & Chris Forssprom  
Denice Fortin  
Dannee Francis  
Lesley Frieson  
Janet Garcia  
James G. Garrett  
Barbara Garrison  
Sandy Garrison  
General Strategic Marketing Ltd.  
Gudrun Wittgen Gilbert  
Carol Golden  
Jennifer Golik  
James Gordon  
Andrea Grainger  
Gail Green  
Cindy Hall - Spectrum Business Consultants  
Jennifer Hall  
Linda Hall  
Dr. Jane B. Hardin  
Donna L. Hartman  
Joanne Hartough  
Nancy Havell  
David and Judi Hayes  
Ginger Hays  
Georgianna Heath  
Ms. Diane Heise  
Heather & Ted Helard  
Cindy Hendrick  
Betty Hester - MasterFoods USA  
Deanna Hettick - Courtney Law Firm  
Kathy Hewitt  
Mary Kuehl & Jean Hillstrom  
Carol K. Hobbs  
J. Keith Holaway  
Susan Holland  
Susan Hopkins  
Jill, Ross & Kedzie Horwich  
Karen Hoxie  
Michelle Hubbard  
Cindy Hutchens  
Sandra K. Huyge  
Dana Icenhour  
Helen Joffrion  
Nikkie Johnson  
Donna & Chris Karabin  
Luzie Keierleber  
Allison Kelly  
Yvonne Au Kenniston  
Jeremy Killian  
Kim King  
Lisa B. Kirchner  
Trish Kirk-Muench  
Janie Knick  
Ruth & Cindy Kurzrock  
Jacqueline Lang  
Tore & Norma Larssen  
Candy Lee  
Michele Lloyd  
Jennifer Lockwood  
Dr. Lynn Lofthouse  
Pamela London  
Albert Ambrose - Lowe Graphic & Printing

George L. Maltese  
Maureen Adams - Manna Supply, Inc.  
Rebecca Marner  
Donna J. Marshall &  
W. Higgins  
Leslie Maslow - Copy Cottage  
Willie Hurd - Maury Fence Co. of Tennessee  
Elizabeth I Maxwell  
Mary J. McBride  
Nancy - McCartney Produce Company  
Karina McDaniel  
Lisa A. McDowell  
Lois D. McGee  
Traci McGrath  
Carolyn McIntyre  
Suzanne & Hannah McKee  
Linda McKenney  
Linda E. Metzger  
Ellen M. Meyer  
Andra Meyland  
Anne H. Miller  
Eve Mobley - Morgan & Phaute Mobley  
Kathleen Mohning  
Cora Moore  
Scott Morgan  
Sandra Moss  
Angelika Mundt  
Vickie & Bobby Myers - West Wind Farms  
Robin Navarre  
Sandy Nervig  
Mary-Jo Neu  
Merilee Newman  
Jean Newsome  
Ms. Liz Nicholas  
Stacey & Steve Nutter  
Lisa Nygaard  
Dr. John Olsen - Busch Entertainment Corp.  
Don Saunders - Oriental Trading Company  
Peggy Ornelas  
Michelle A. Ortman  
Cynthia Pearson  
Katherine Penchuk  
Steven Penn  
Colleen Perrin  
Sharon Petty  
Emily Picardi  
Deadra Jewell - Piedmont Plastics, INC  
Peter Placido, Jr.  
Diana Plattner  
John Pound  
Ginny & Ron Powers  
Ellon Quillen  
Kathy Reed  
Anita M. Reinisch  
Barbara Ribinski  
Carole Richter  
John Rippetoe, Jr.  
Cindy Robinson  
Cindy & Jon Robison  
Rock Creative Images  
Judy Ann Romanowski  
Suzanne Roscoe  
Dr. Judith Samkoff  
Mr. & Mrs. Owen Sargent  
Meredith Schuman  
Dr. Steve Scott  
Hohenwald Hospital for Animals  
Alex Semilof  
Todd and Maeri Shack  
Principle Building Group - Tony Shankle  
Karen Sharf  
John and Alethea Sheffield  
Victoria Shields  
Ms. Rosanne L. Sietins  
Debra Simon-Nelson  
Sharon Sinclair  
Jan Slotar  
Judith & Gary Smith  
Marcella Smith  
Eileen Snitzer  
Marie Soliman - Bed & Biscuits Kennel  
Specialty Coating Solutions, LLC  
Specialty Surgical Instrumentation  
Gail Spight  
Katie Stables

Michael K. Staggs  
Waller Landsen Dortch & Davis  
Carolyn Stalcup  
Jane Stanley  
Agnes Stark  
Mel S. Stark  
Virginia & Michael Stewart  
Jody Stickney  
Cynthia Stine  
Mariska Stoddard  
Retha Sueda  
Carol Sullivan  
Michael Sultana  
Christine M. Sutton  
Jennifer Swofford  
Rosie Taketa  
Stephanie Tatum  
Cherie & Philip Teague  
Teva  
Mitzzy & Rick - The Cloth Bag Company  
Bridgestone/Firestone Trust  
Richard Thomas  
Danielle N. Thouvenin  
Martha L. Till  
Debby Tolocko  
Stacey R. Trapp  
Margaret L. Trembath  
Harriett Turpin  
Cher Tushiah  
Julie Tyson  
Jonny Urson  
Cherie D. Valentine  
Joan Venegoni  
Vibram USA  
Brian Vick  
Deborah Vuicich  
Caroline Waldon  
Donna J. Walker  
Starling Walter  
Ashly Walton  
Debra Welebny  
Melanie Wells  
Garry & Tami A. Werra  
Shari West  
Khanh & Allan Whiteman  
Lori Viar, Marketing  
Wild Oats - Green Hills  
Harry & Peggy Williams  
Carrie Leigh Willis  
Jeff Wilson  
Karen S. Wilson  
Melissa Wilson  
Ron D. & Donna Wilson  
Beth Wojcik - Myrna Wojcik  
Trudy A. Yarbrough  
Janice & Manuel Zeitlin  
Zeitgeist Gallery  
Elinor Zetina  
Maria Zoltek